

Комбинированные мотор-редукторы на постоянных неодимовых магнитах

Руководство по эксплуатации

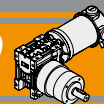


Архангельск (8182)63-90-72
Астана (7172)727-132
Белгород (4722)40-23-64
Брянск (4832)59-03-52
Владивосток (423)249-28-31
Волгоград (844)278-03-48
Вологда (8172)26-41-59
Воронеж (473)204-51-73
Екатеринбург (343)384-55-89
Иваново (4932)77-34-06
Ижевск (3412)26-03-58
Казань (843)206-01-48

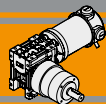
Калининград (4012)72-03-81
Калуга (4842)92-23-67
Кемерово (3842)65-04-62
Киров (8332)68-02-04
Краснодар (861)203-40-90
Красноярск (391)204-63-61
Курск (4712)77-13-04
Липецк (4742)52-20-81
Магнитогорск (3519)55-03-13
Москва (495)268-04-70
Мурманск (8152)59-64-93
Набережные Челны (8552)20-53-41

Нижний Новгород (831)429-08-12
Новокузнецк (3843)20-46-81
Новосибирск (383)227-86-73
Орел (4862)44-53-42
Оренбург (3532)37-68-04
Пенза (8412)22-31-16
Пермь (342)205-81-47
Ростов-на-Дону (863)308-18-15
Рязань (4912)46-61-64
Самара (846)206-03-16
Санкт-Петербург (812)309-46-40
Саратов (845)249-38-78

Смоленск (4812)29-41-54
Сочи (862)225-72-31
Ставрополь (8652)20-65-13
Тверь (4822)63-31-35
Томск (3822)98-41-53
Тула (4872)74-02-29
Тюмень (3452)66-21-18
Ульяновск (8422)24-23-59
Уфа (347)229-48-12
Челябинск (351)202-03-61
Череповец (8202)49-02-64
Ярославль (4852)69-52-93



Indice	Index	Pag. Page
Caratteristiche tecniche	<i>Technical features</i>	G2
Designazione	<i>Classification</i>	G2
Versioni	<i>Versions</i>	G2
Simbologia	<i>Symbols</i>	G2
Lubrificazione	<i>Lubrication</i>	G3
Carichi radiali	<i>Radial loads</i>	G3
Rapporti	<i>Ratios</i>	G4
Dati tecnici	<i>Technical data</i>	G5
Dimensioni	<i>Dimensions</i>	G6
Note	<i>Notes</i>	G10



Caratteristiche tecniche

Technical features

L'accoppiamento di un riduttore a vite senza fine con un riduttore epicicloidale consente di ottenere elevati rapporti di riduzione ($i_{max} = 1/18452$) e di disporre di un gruppo autolubrificato compatto, silenzioso e con un'elevata affidabilità.

The coupling of a wormgearbox to a planetary gearbox allows to obtain high reduction ratios ($i_{max} = 1/18452$) and to get a compact, silent, self lubricated with high reliability group.

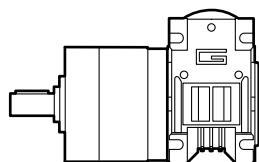
Designazione

Classification

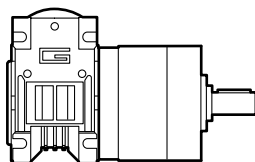
MOTORIDUTTORE / GEARMOTOR								
NDWMP	120/026/52		2	CD	90	405	240	BR
Tipo Type	Grandezza Size		Numero stadi epicicloidale Planetary stages number	Versione Riduttore Gearbox Version	Flangia Uscita Output flange	Rapporto Ratio	Versione Motore Motor Version	Opzioni Options
	NDWMP	120/026/52	180/026/62	1	US	Vedere tabella See tables	120	BR
		120/026/62						
		120/030/81	3	CS	105			
					CD		120	

Versioni

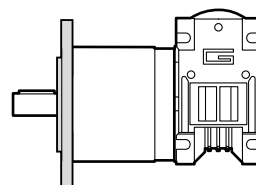
Versions



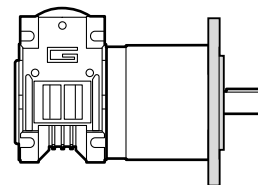
US



UD



CS

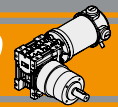


CD

Simbologia

Symbols

n_1	[min ⁻¹]	Velocità in ingresso / <i>Input speed</i>
n_2	[min ⁻¹]	Velocità in uscita / <i>Output speed</i>
i		Rapporto di riduzione / <i>Ratio</i>
P_1	[kW]	Potenza in entrata / <i>Input power</i>
M_n	[Nm]	Coppia nominale in uscita del riduttore / <i>Maximum output torque of the gearbox</i>
M_2	[Nm]	Coppia in uscita in funzione di P_1 / <i>Output torque referred to P_1</i>
sf		Fattore di servizio / <i>Service factor</i>
R_d	%	Rendimento dinamico / <i>Dynamic efficiency</i>
A_2	[N]	Carico assiale ammissibile in uscita / <i>Permitted output axial load</i>
R_2	[N]	Carico radiale ammissibile in uscita / <i>Permitted output radial load</i>



Lubrificazione

Lubrication

I riduttori a vite senza fine della serie CM sono lubrificati a vita con olio sintetico di viscosità 320 e possono essere installati in qualunque posizione di montaggio.

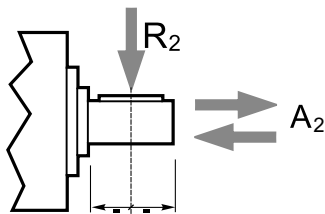
Permanent synthetic oil long-life lubrication allow to use CM wormgearbox range in all mounting position.

I riduttori epicicloidali sono lubrificati in modo permanente, non richiedono quindi ulteriore manutenzione. Questo gli consente di essere installati praticamente ovunque.

Planetary gearboxes are life-time lubricated with grease, therefore they are maintenance free. They can be installed in any location.

Carichi radiali

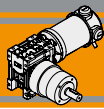
Radial loads



Numero di stadi Stages number	Carichi Radiali R_2 [N] Radial Load R_2 [N]		
	P52	P62	P81
1	200	240	400
2	320	360	600
3	450	520	1000

Numero di stadi Stages number	Carichi Assiali A_2 [N] Axial Load A_2 [N]		
	P52	P62	P81
1	60	70	80
2	100	100	120
3	150	150	200

NDWMP



Rapporti

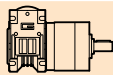
Ratios

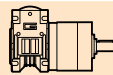
Motoriduttore Gearmotor	Numero stadi epicicloidale Planetary stages number	Rapporto epicicloidale Planetary ratio	Rapporto vite senza fine Wormgearbox ratio	Rapporto finale Total ratio
.../026/52 .../026/62 .../030/81	1	6.75	10	67.5
			15	101.3
			20	135
			30	202.5
			40	270
			50	337.5
			60	405
	2	28.93	10	289.3
			15	434.0
			20	578.6
			30	867.9
			40	1157
			50	1447
			60	1736
	34.97	60	2098	
	45.56	60	2734	



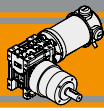
Dati tecnici per servizio S2

Technical data for S2 duty

P_1 [W]	n_2 [min ⁻¹]	M_2 [Nm]	sf	i		Versione motore Motor version
160						
(3000 min ⁻¹)	44.4	23	1.1	67.5	120/026/521	120/240
	29.6	25	1.0	101.3		
	22.2	25	1.0	135.0		
	14.8	25	1.0	202.5		
	11.1	25	1.0	270.0		
	10.4	25	1.0	289.3	120/026/522	120/240
	8.9	25	1.0	337.5	120/026/521	120/240
	7.4	25	1.0	405.0		
	6.9	25	1.0	434.0	120/026/522	120/240
	5.2	25	1.0	578.6		
	3.5	25	1.0	867.9		
	2.6	25	1.0	1157.0		
	2.1	25	1.0	1447.0		
	1.7	25	1.0	1736.0		
	1.4	25	1.0	2098.0		
	1.1	25	1.0	2734.0		
	44.4	23	1.7	67.5	120/026/621	120/240
	29.6	34	1.2	101.3		
	22.2	40	1.0	135.0		
	14.8	40	1.0	202.5		
	11.1	40	1.0	270.0		
	10.4	50	1.0	289.3	120/026/622	120/240
	8.9	40	1.0	337.5	120/026/621	120/240
	7.4	40	1.0	405.0		
	6.9	50	1.0	434.0	120/026/622	120/240
	5.2	50	1.0	578.6		
	3.5	50	1.0	867.9		
	2.6	50	1.0	1157.0		
	2.1	50	1.0	1447.0		
	1.7	50	1.0	1736.0		
	1.4	50	1.0	2098.0		
	1.1	50	1.0	2734.0		

P_1 [W]	n_2 [min ⁻¹]	M_2 [Nm]	sf	i		Versione motore Motor version		
160								
(3000 min ⁻¹)	44.4	24	3.4	67.5	120/030/811	120/240		
	29.6	35	2.3	101.3				
	22.2	45	1.8	135.0				
	14.8	61	1.3	202.5				
	11.1	77	1.0	270.0				
	10.4	95	1.3	289.3	120/030/812	120/240		
	8.9	80	1.0	337.5	120/030/811	120/240		
	7.4	80	1.0	405.0				
	6.9	120	1.0	434.0	120/030/812	120/240		
	5.2	120	1.0	578.6				
	3.5	120	1.0	867.9				
	2.6	120	1.0	1157.0				
	2.1	120	1.0	1447.0				
	1.7	120	1.0	1736.0				
	1.4	120	1.0	2098.0				
	1.1	120	1.0	2734.0				
250								
(3000 min ⁻¹)	44.4	37	1.1	67.5	180/026/621	120/240		
	44.4	40	2.0	67.5			180/030/811	120/240
	29.6	54	1.5	101.3				120/240
	22.2	70	1.1	135.0				120/240
	14.8	80	1.0	202.5				120/240
	10.4	120	1.0	289.3	180/030/812	120/240		

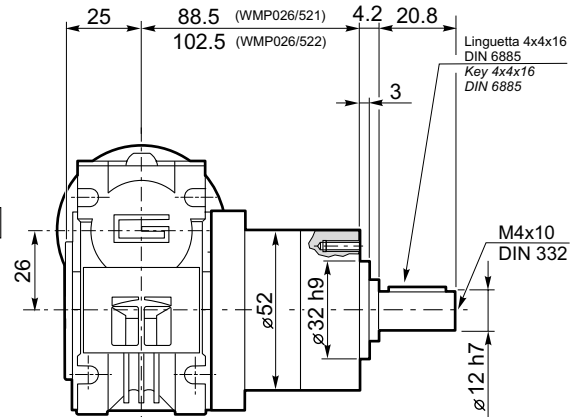
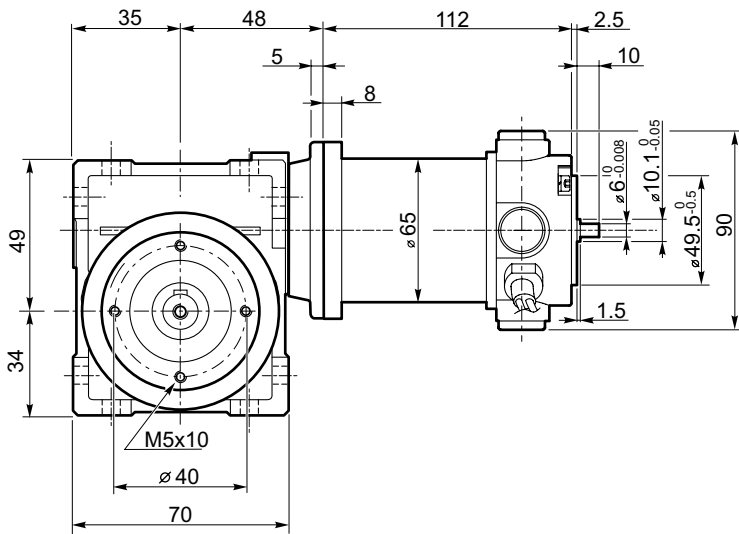
Nota: Verificare sempre che la coppia M_2 utilizzata non ecceda il valore indicato nelle caselle in grigio
Note: Please check that the output torque M_2 does not exceed the value into the grey areas



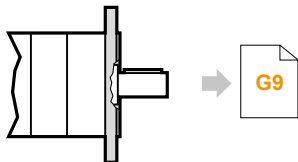
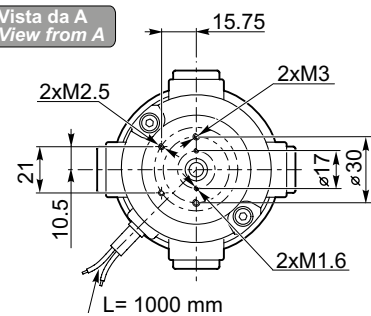
Dimensioni

Dimensions

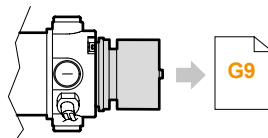
NDWMP120/026/52...U



Vista da A
View from A

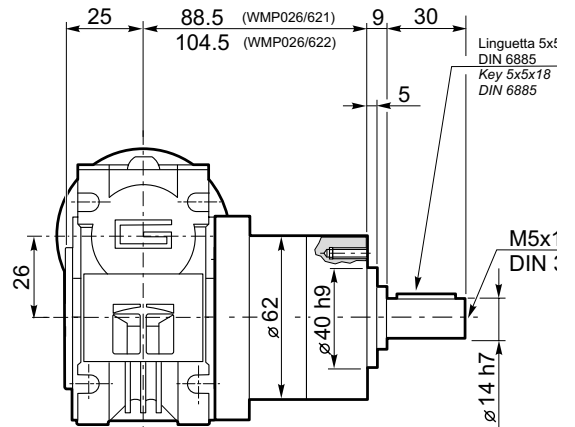
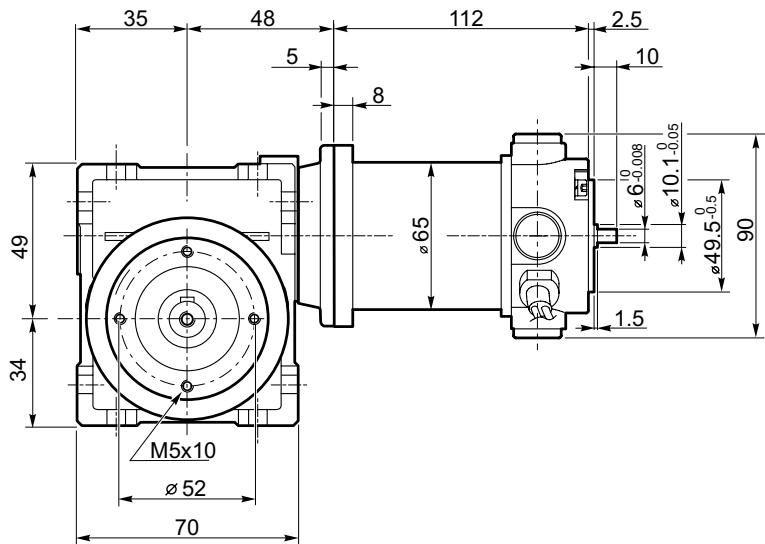


NDWMP120/026/52...C

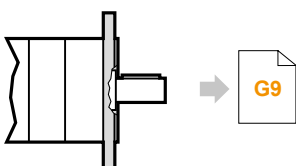
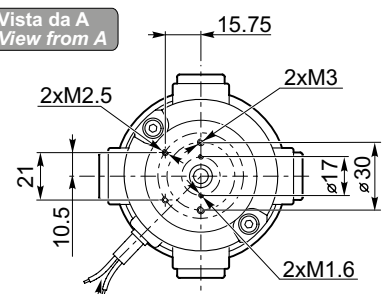


**NDWMP120/026/52...U BR
NDWMP120/026/52...U BRL**

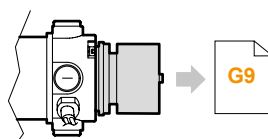
NDWMP120/026/62...U



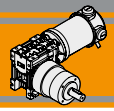
Vista da A
View from A



NDWMP120/026/62...C



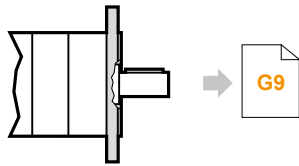
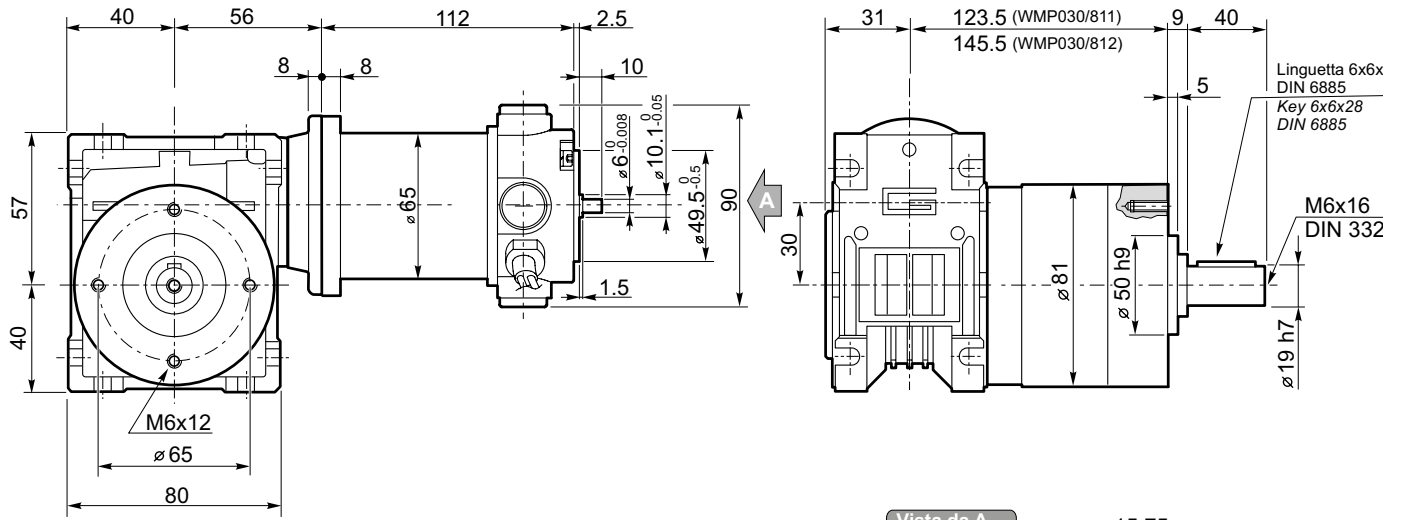
**NDWMP120/026/62...U BR
NDWMP120/026/62...U BRL**



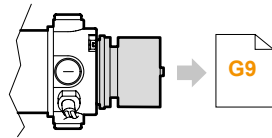
Dimensioni

Dimensions

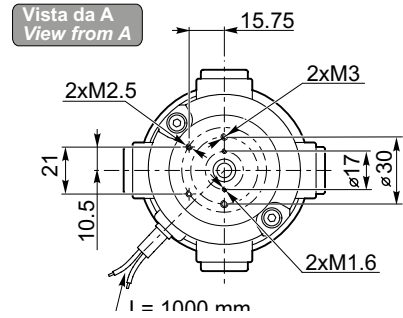
NDWMP120/030/81...U



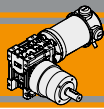
NDWMP120/030/81...C



**NDWMP120/030/81...U BR
 NDWMP120/030/81...U BRL**



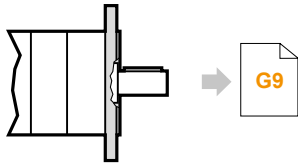
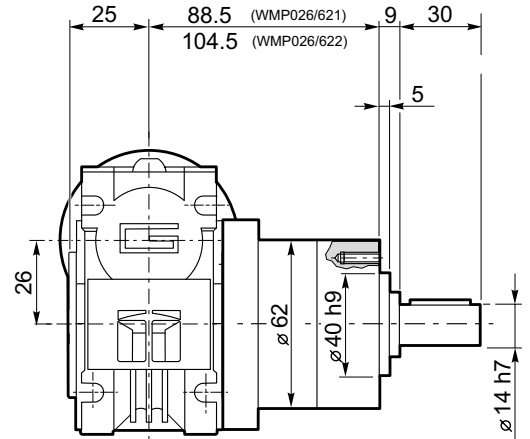
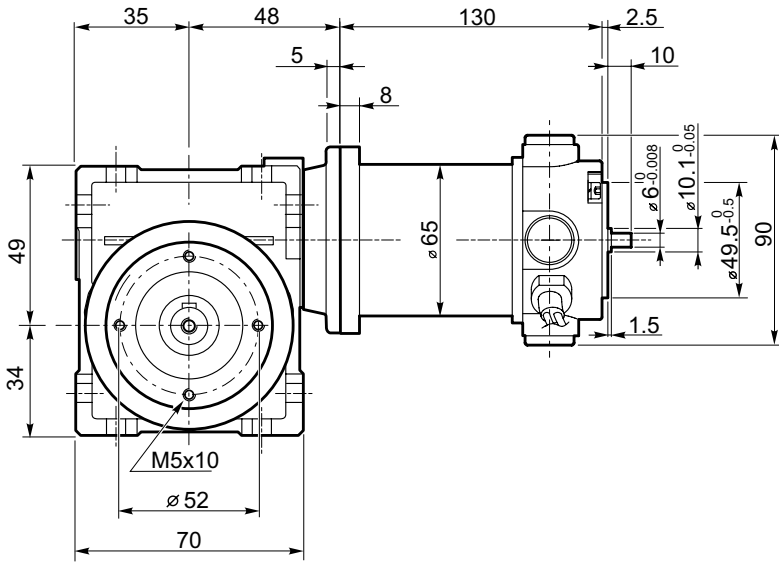
NDWMP



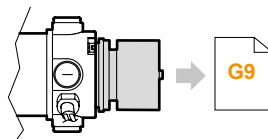
Dimensioni

Dimensions

NDWMP180/026/62...U

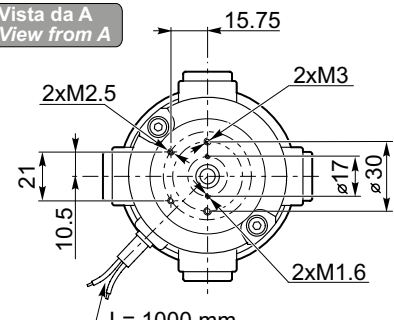


NDWMP180/026/62...C

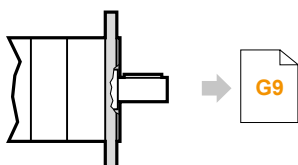
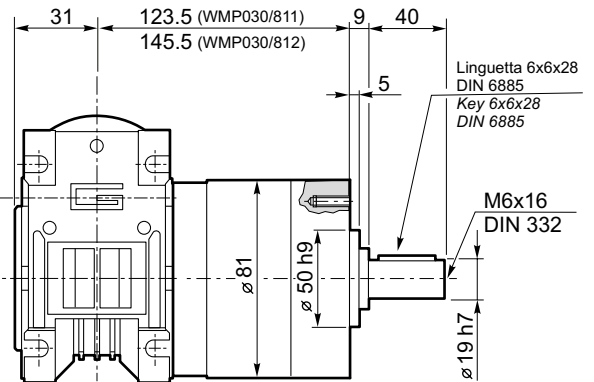
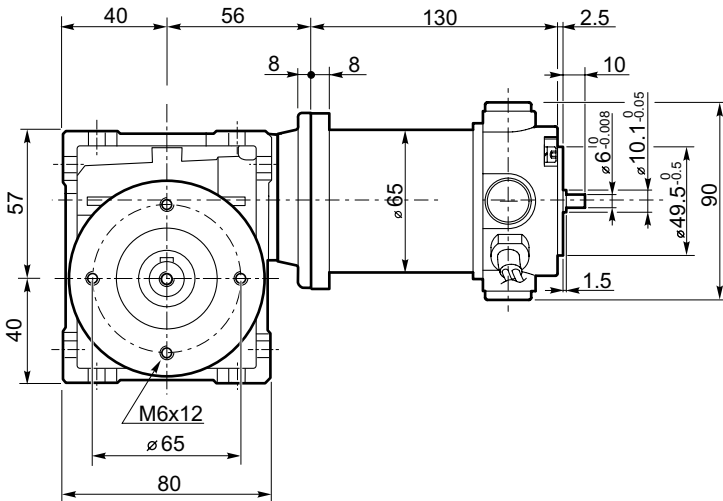


**NDWMP180/026/62...U BR
NDWMP180/026/62...U BRL**

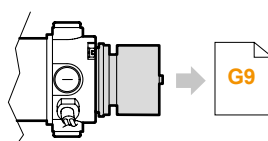
Vista da A
View from A



NDWMP180/030/81...U

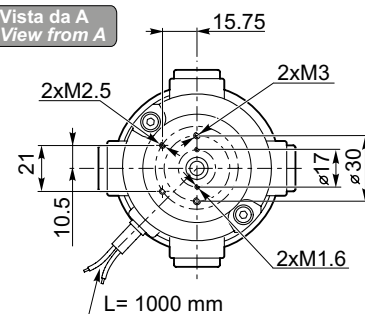


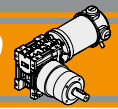
NDWMP180/030/81...C



**NDWMP180/030/81...U BR
NDWMP180/030/81...U BRL**

Vista da A
View from A

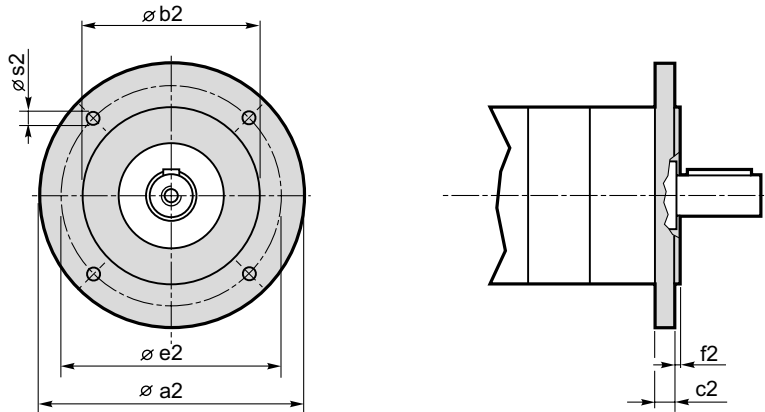




Dimensioni

Dimensions

NDWMP.../.../... C... Flange uscita / Output flanges

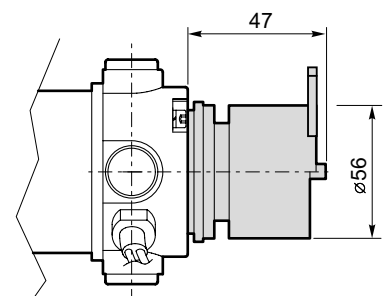
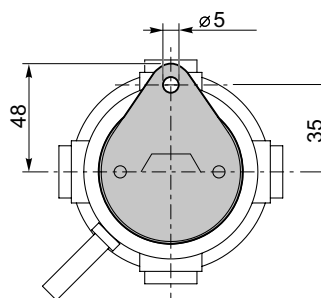
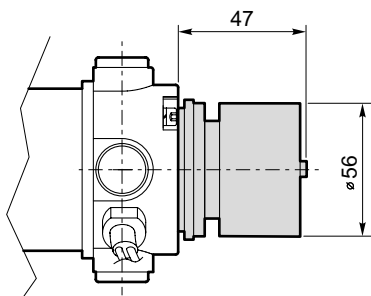


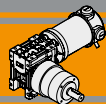
Dimensioni / Dimensions							
P	a2	b2	c2	e2	f2	s2	Flangia uscita Output flange
52	80	50 j7	9	65	2.5	M5	C80
	90	60 j7	9	75	2.5	5.5	C90
	105	70 j7	9	85	2.5	6.5	C105
	120	80 j7	9	100	3.0	6.5	C120
62	80	50 j7	9	65	2.5	M5	C80
	90	60 j7	9	75	2.5	5.5	C90
	105	70 j7	9	85	2.5	6.5	C105
	120	80 j7	9	100	3.0	6.5	C120
81	90	60 j7	9	75	2.5	M5	C90
	105	70 j7	9	85	2.5	M6	C105
	120	80 j7	9	100	3.0	6.5	C120

NDWMP

NDP.../... U BR Freno / Brake

NDP.../... U BRL Freno con leva di sblocco / Brake with hand release





Архангельск (8182)63-90-72
Астана (7172)727-132
Белгород (4722)40-23-64
Брянск (4832)59-03-52
Владивосток (423)249-28-31
Волгоград (844)278-03-48
Вологда (8172)26-41-59
Воронеж (473)204-51-73
Екатеринбург (343)384-55-89
Иваново (4932)77-34-06
Ижевск (3412)26-03-58
Казань (843)206-01-48

Калининград (4012)72-03-81
Калуга (4842)92-23-67
Кемерово (3842)65-04-62
Киров (8332)68-02-04
Краснодар (861)203-40-90
Красноярск (391)204-63-61
Курск (4712)77-13-04
Липецк (4742)52-20-81
Магнитогорск (3519)55-03-13
Москва (495)268-04-70
Мурманск (8152)59-64-93
Набережные Челны (8552)20-53-41

Нижний Новгород (831)429-08-12
Новокузнецк (3843)20-46-81
Новосибирск (383)227-86-73
Орел (4862)44-53-42
Оренбург (3532)37-68-04
Пенза (8412)22-31-16
Пермь (342)205-81-47
Ростов-на-Дону (863)308-18-15
Рязань (4912)46-61-64
Самара (846)206-03-16
Санкт-Петербург (812)309-46-40
Саратов (845)249-38-78

Смоленск (4812)29-41-54
Сочи (862)225-72-31
Ставрополь (8652)20-65-13
Тверь (4822)63-31-35
Томск (3822)98-41-53
Тула (4872)74-02-29
Тюмень (3452)66-21-18
Ульяновск (8422)24-23-59
Уфа (347)229-48-12
Челябинск (351)202-03-61
Череповец (8202)49-02-64
Ярославль (4852)69-52-93