

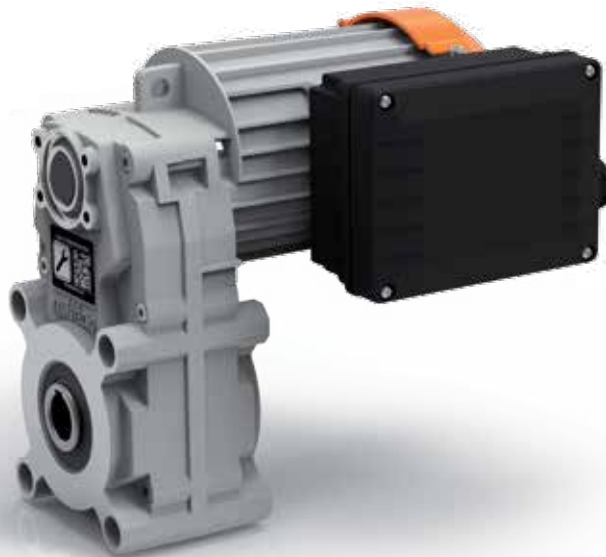
# KFT105

KFT105



## Цилиндрические мотор-редукторы с параллельными валами

### Руководство по эксплуатации

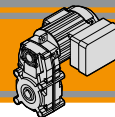


Архангельск (8182)63-90-72  
Астана (7172)727-132  
Белгород (4722)40-23-64  
Брянск (4832)59-03-52  
Владивосток (423)249-28-31  
Волгоград (844)278-03-48  
Вологда (8172)26-41-59  
Воронеж (473)204-51-73  
Екатеринбург (343)384-55-89  
Иваново (4932)77-34-06  
Ижевск (3412)26-03-58  
Казань (843)206-01-48

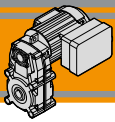
Калининград (4012)72-03-81  
Калуга (4842)92-23-67  
Кемерово (3842)65-04-62  
Киров (8332)68-02-04  
Краснодар (861)203-40-90  
Красноярск (391)204-63-61  
Курск (4712)77-13-04  
Липецк (4742)52-20-81  
Магнитогорск (3519)55-03-13  
Москва (495)268-04-70  
Мурманск (8152)59-64-93  
Набережные Челны (8552)20-53-41

Нижний Новгород (831)429-08-12  
Новокузнецк (3843)20-46-81  
Новосибирск (383)227-86-73  
Орел (4862)44-53-42  
Оренбург (3532)37-68-04  
Пенза (8412)22-31-16  
Пермь (342)205-81-47  
Ростов-на-Дону (863)308-18-15  
Рязань (4912)46-61-64  
Самара (846)206-03-16  
Санкт-Петербург (812)309-46-40  
Саратов (845)249-38-78

Смоленск (4812)29-41-54  
Сочи (862)225-72-31  
Ставрополь (8652)20-65-13  
Тверь (4822)63-31-35  
Томск (3822)98-41-53  
Тула (4872)74-02-29  
Тюмень (3452)66-21-18  
Ульяновск (8422)24-23-59  
Уфа (347)229-48-12  
Челябинск (351)202-03-61  
Череповец (8202)49-02-64  
Ярославль (4852)69-52-93



<b>Indice</b>	<b>Index</b>	Pag. Page
Caratteristiche tecniche	<i>Technical features</i>	<b>D2</b>
Designazione	<i>Classification</i>	<b>D2</b>
Simbologia	<i>Symbols</i>	<b>D3</b>
Lubrificazione	<i>Lubrication</i>	<b>D3</b>
Carichi radiali	<i>Radial loads</i>	<b>D3</b>
Dati tecnici	<i>Technical data</i>	<b>D4</b>
Dati tecnici elettrici	<i>Electrical technical data</i>	<b>D5</b>
Dimensioni	<i>Dimensions</i>	<b>D6</b>



# KFT105 Motoriduttori pendolari Helical parallel gearmotors

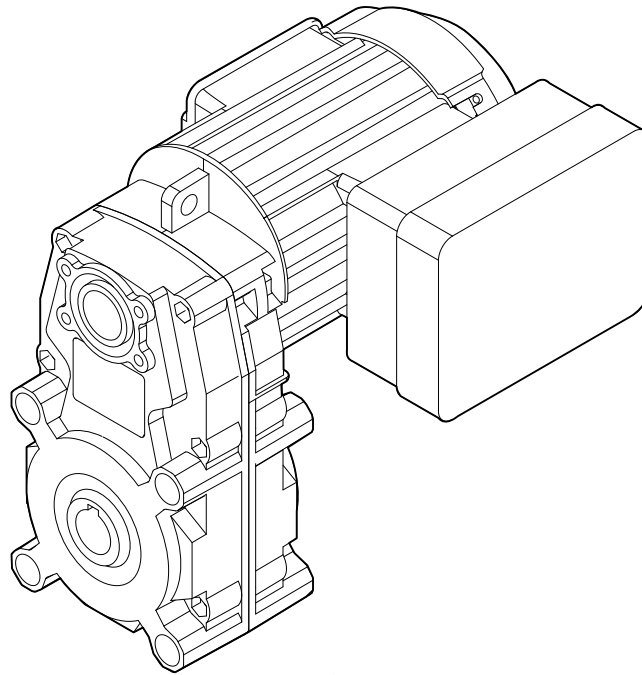
## Caratteristiche tecniche

## Technical features

I motoriduttori pendolari della serie KFT105 hanno le seguenti caratteristiche principali:

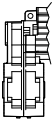
KFT105 helical parallel gearmotors range has the following main features:

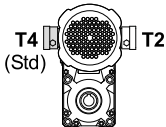
- Costruzione compatta
- Motorizzazioni in corrente alternata monofase e trifase
- Carcassa in pressofusione di alluminio
- Ingranaggi cilindrici a denti elicoidali
- Lubrificazione permanente con olio sintetico
- Disponibili a 3 e 4 stadi di riduzione
- Compact design
- AC single phase and three phase motors available
- Die-cast aluminum housings
- Helical gears
- Permanent synthetic oil long-life lubrication
- Available with 3 and 4 reduction stages

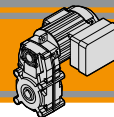


## Designazione

## Classification

RIDUTTORE / GEARBOX				
KFT	105/3	U	88.87	O20
Tipo Type	Grandezza Size	Versione Version	Rapporto Ratio	Albero cavo uscita Hollow output shaft
	105/3 105/4	U... F...	vedi tabelle see tables	vedi tabelle see tables

MOTORE / MOTOR						
40W	4p	3ph	230/400V	50Hz	T1	TEFC
Potenza Power	Poli Poles	Fasi Phases	Tensione Voltage	Frequenza Frequency	Pos. morsetti Terminal box pos.	Ventilazione Fan cooling
vedi tabelle see tables	2p 4p 6p	1ph 3ph	230V ... 230/400V ...	50Hz 60Hz		TEFC TENV



Simbologia

$n_1$	[min <sup>-1</sup> ]	Velocità in ingresso / <i>Input speed</i>
$n_2$	[min <sup>-1</sup> ]	Velocità in uscita / <i>Output speed</i>
$i$		Rapporto di riduzione / <i>Ratio</i>
$P_1$	[kW]	Potenza in entrata / <i>Input power</i>
$M_2$	[Nm]	Coppia nominale in uscita in funzione di $P_1$ / <i>Output torque referred to <math>P_1</math></i>
$P_{n1}$	[kW]	Potenza nominale in entrata / <i>Nominal input power</i>
$M_n$	[Nm]	Coppia nominale / <i>Nominal torque</i>
$sf$		Fattore di servizio / <i>Service factor</i>
$R_2$	[N]	Carico radiale ammissibile in uscita / <i>Permitted output radial load</i>
$A_2$	[N]	Carico assiale ammissibile in uscita / <i>Permitted output axial load</i>
$V$	[N]	Tensione / <i>Voltage</i>
$F$	[Hz]	Frequenza / <i>Frequency</i>
$I_n$	[A]	Corrente nominale / <i>Nominal current</i>
$I_s$	[A]	Corrente di spunto / <i>Start current</i>
$\cos\phi$		Fattore di potenza / <i>Power factor</i>
$C$	[ $\mu$ ]	Capacità del condensatore / <i>Capacitor</i>

Lubrificazione

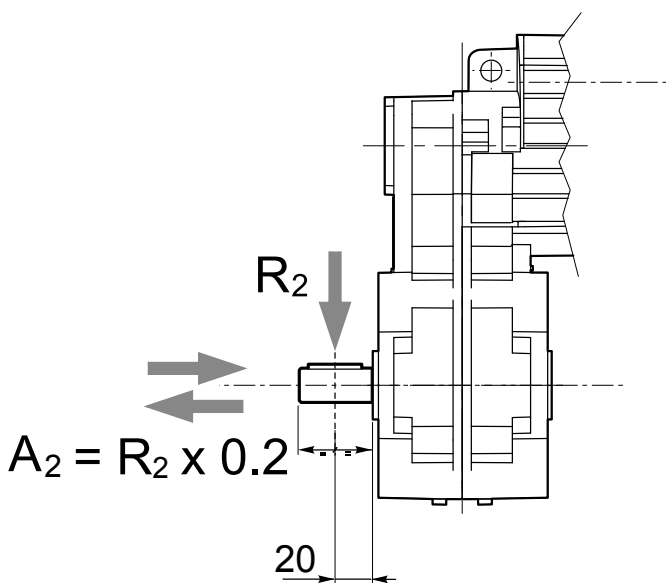
Lubrication

Tutti i motoriduttori sono forniti completi di lubrificante sintetico viscosità 320, pertanto possono essere installati in qualunque posizione di montaggio e non necessitano di manutenzione.

*Permanent synthetic oil long-life lubrication ( viscosity grade 320) makes it possible to use the gearmotors in all mounting positions; for this reason they can be installed in any assembly position and do not require maintenance.*

Carichi radiali

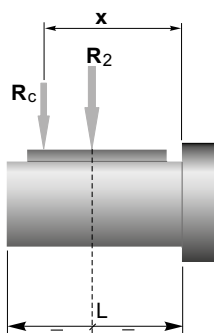
Radial loads



$n_2$ [min <sup>-1</sup> ]	$R_2$ [N]
	KFT105
70	1500
40	1700
30	1850
20	2000
10	2000
5	2000

Quando il carico radiale risultante non è applicato sulla mezzeria dell'albero occorre calcolare quello effettivo con la seguente formula:

*When the resulting radial load is not applied on the centre line of the shaft it is necessary to calculate the effective load with the following formula:*

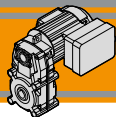


	KFT105
$a$	82
$b$	62
$R_{2MAX}$	2000

$$R_c = \frac{R_2 \cdot a}{(b + x)} \leq R_{2MAX}$$

*a, b = valori riportati nella tabella  
a, b = values given in the table*

$$R \leq R_c$$










# KFT105 Motoriduttori pendolari

## Helical parallel gearmotors

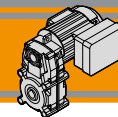
### Dati tecnici

### Technical data

$P_1$ [W]	$n_2$ [min <sup>-1</sup> ]	$M_2$ [Nm]	sf	$M_n$ [Nm]	i		$P_1$ [W]	$n_2$ [min <sup>-1</sup> ]	$M_2$ [Nm]	sf	$M_n$ [Nm]	i	
<b>25</b>							<b>90</b>						
68	3	12.1	40	20.57	KFT105/3		68	12	3.4	40	20.57	KFT105/3	
42	5	9.4	50	33.32			42	19	2.6	50	33.32		
32	7	9.1	65	44.36			32	26	2.5	65	44.36		
26	9	7.4	65	54.87			26	32	2.1	65	54.87		
19	12	5.6	65	71.84			19	41	1.6	65	71.84		
18	12	5.3	65	77.07			18	44	1.5	65	77.07		
16	14	4.6	65	88.87			16	51	1.3	65	88.87		
11	20	3.2	65	124.81			11	72	0.9	65	124.81		
7.7	29	2.2	65	181.35			7.7	105	0.62	65	181.35		
6.2	36	1.8	65	224.32			6.2	110	0.59	65	224.32		
4.4	51	1.3	65	315.05	4.4	110	0.59	65	315.05				
3.8	58	1.1	65	368.19	KFT105/4	3.8	120	0.54	65	368.19	KFT105/4		
2.6	84	0.8	65	534.98	2.6	120	0.54	65	534.98				
2.1	104	0.63	65	661.76	2.1	120	0.54	65	661.76				
1.5	120	0.54	65	929.40	1.5	120	0.54	65	929.40				
<b>40</b>							<b>120</b>						
68	5	7.6	40	20.57	KFT105/3		68	16	2.5	40	20.57	KFT105/3	
42	9	5.9	50	33.32			42	26	2.0	50	33.32		
32	11	5.7	65	44.36			32	34	1.9	65	44.36		
26	14	4.6	65	54.87			26	42	1.5	65	54.87		
19	18	3.5	65	71.84			19	55	1.2	65	71.84		
18	20	3.3	65	77.07			18	59	1.1	65	77.07		
16	23	2.9	65	88.87			16	68	1.0	65	88.87		
11	32	2.0	65	124.81			11	96	0.7	65	124.81		
7.7	47	1.4	65	181.35			7.7	110	0.59	65	181.35		
6.2	58	1.1	65	224.32			6.2	110	0.59	65	224.32		
4.4	81	0.8	65	315.05	4.4	110	0.59	65	315.05				
3.8	92	0.7	65	368.19	KFT105/4	3.8	120	0.54	65	368.19	KFT105/4		
2.6	120	0.54	65	534.98	2.6	120	0.54	65	534.98				
2.1	120	0.54	65	661.76	2.1	120	0.54	65	661.76				
1.5	120	0.54	65	929.40	1.5	120	0.54	65	929.40				
<b>60</b>													
68	8	5.1	40	20.57	KFT105/3								
42	13	3.9	50	33.32									
32	17	3.8	65	44.36									
26	21	3.1	65	54.87									
19	28	2.4	65	71.84									
18	30	2.2	65	77.07									
16	34	1.9	65	88.87									
11	48	1.4	65	124.81									
7.7	70	0.9	65	181.35									
6.2	86	0.8	65	224.32									
4.4	110	0.59	65	315.05									
3.8	120	0.54	65	368.19	KFT105/4								
2.6	120	0.54	65	534.98									
2.1	120	0.54	65	661.76									
1.5	120	0.54	65	929.40									

N.B.  
Verificare sempre che la coppia  $M_2$  utilizzata non ecceda il valore indicato nelle caselle in grigio

N.B.  
Please check that the output torque  $M_2$  does not exceed the value in the grey areas



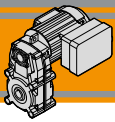
**Dati tecnici elettrici**

**Electrical technical data**

1 Ph	$P_n$ [W]	$V$ [V]	$F$ [Hz]	$I_n$ [A]	$I_s$ [A]	$\cos\phi$	$C$ [ $\mu$ F]
	25	230	50	0.40	0.58	0.98	8.0
	40			0.60	1.00	0.70	8.0
	60			0.65	1.71	0.84	8.0
	90			0.85	1.75	0.93	12.5
	120			1.10	3.00	0.97	14.0

3 Ph	$P_n$ [W]	$V$ [V]	$F$ [Hz]	$I_n$ [A]	$I_s$ [A]	$\cos\phi$
	25	230	50	0.43	0.69	0.55
		400				
	40	230	50	0.52	0.95	0.55
		400				
	60	230	50	0.61	1.21	0.64
		400				
	90	230	50	0.69	1.56	0.70
		400				
	120	230	50	0.80	2.40	0.72
		400				

KFT

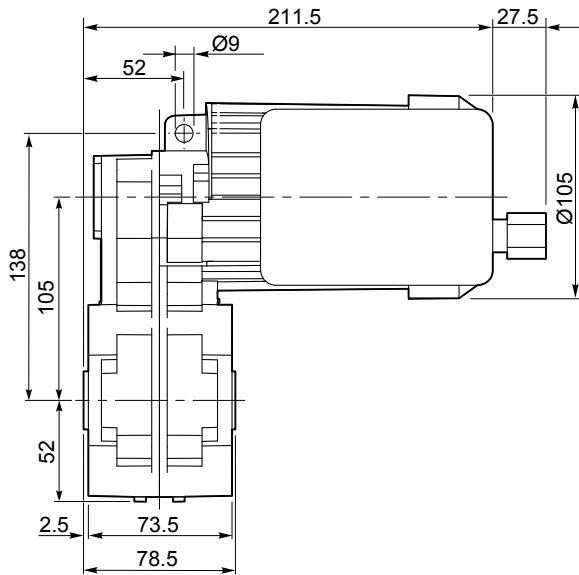


Dimensioni

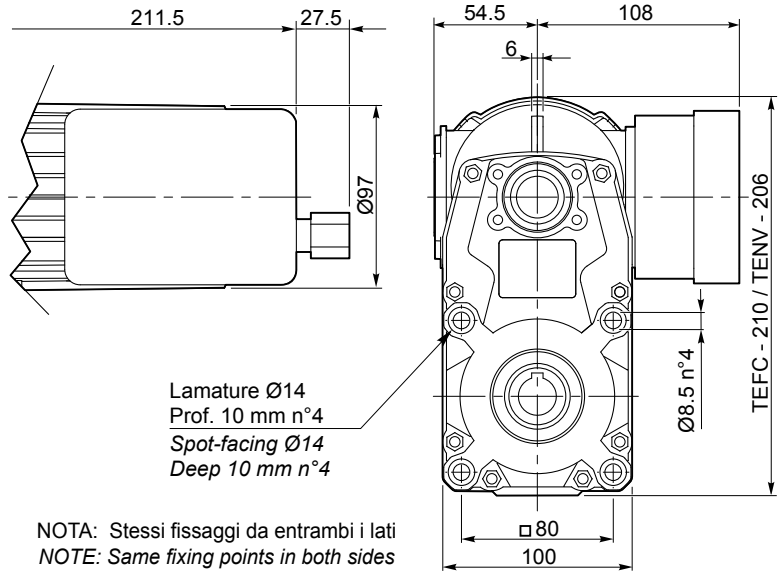
Dimensions

### KFT 105... 25W - 40W - 60W - 90W

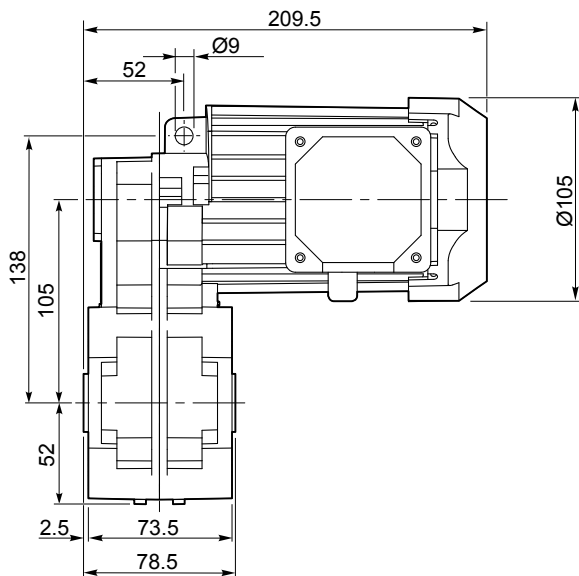
#### KFT 105...1 Ph...TEFC



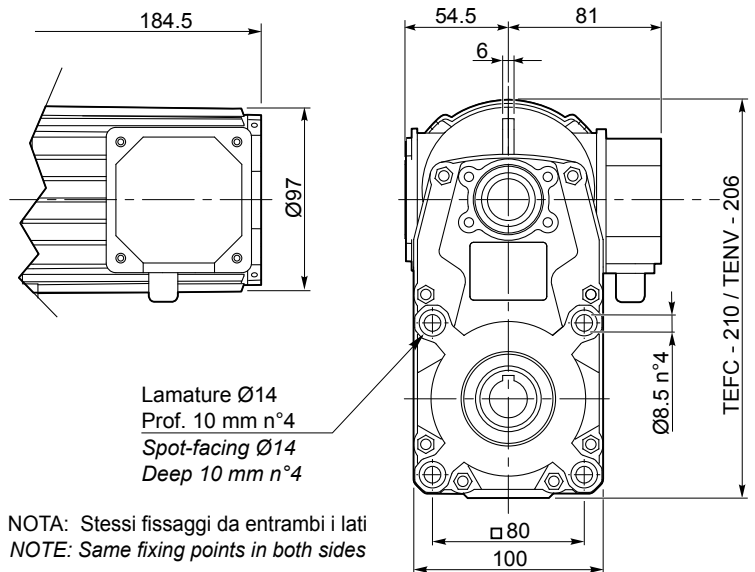
#### KFT 105...1 Ph...TENV



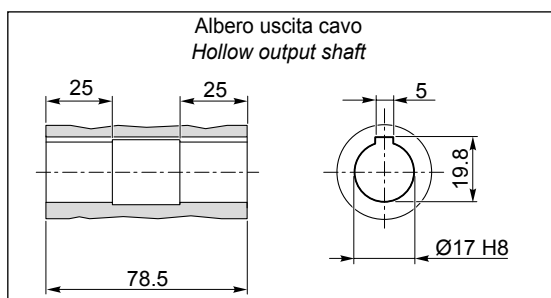
#### KFT 105...3 Ph... TEFC



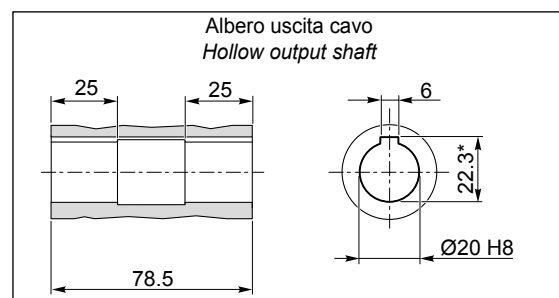
#### KFT 105...3 Ph... TENV



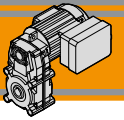
#### O17



#### O20



\*Sede linguetta ribassata / Special Keyway



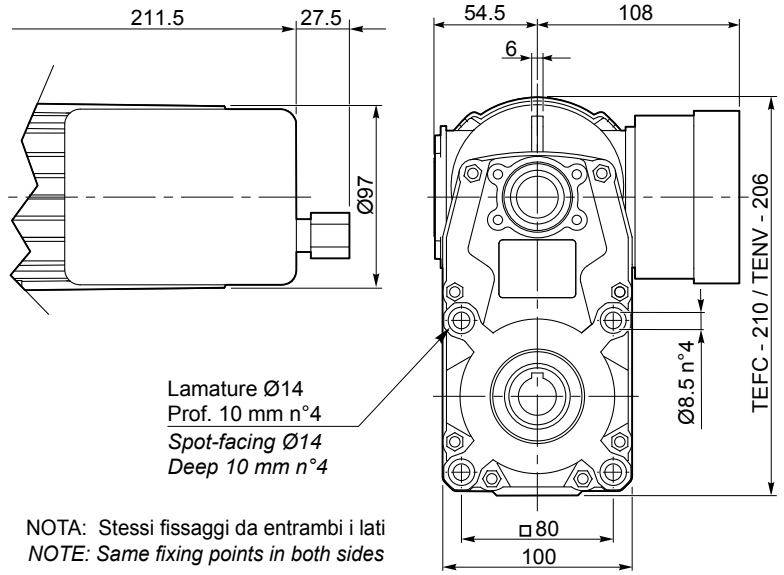
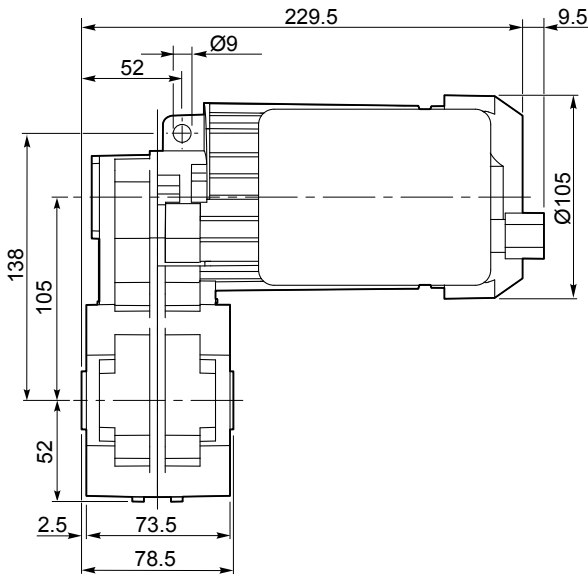
Dimensioni

Dimensions

**KFT 105... 120W**

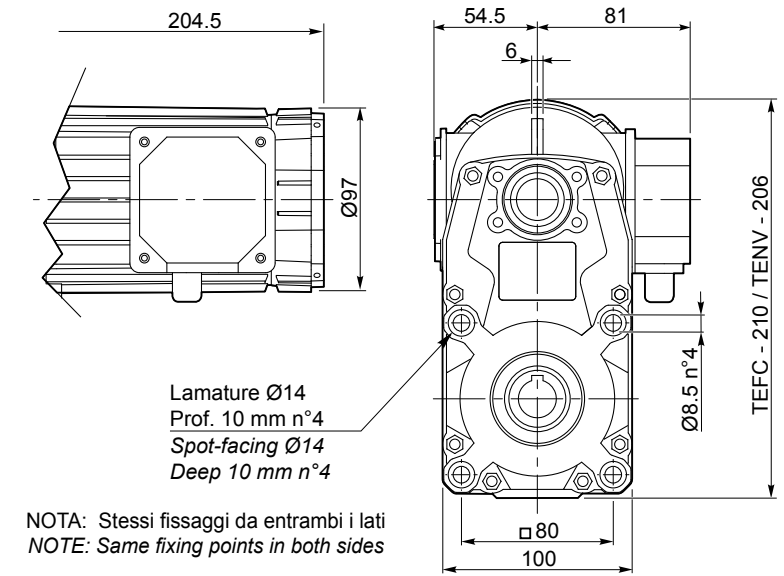
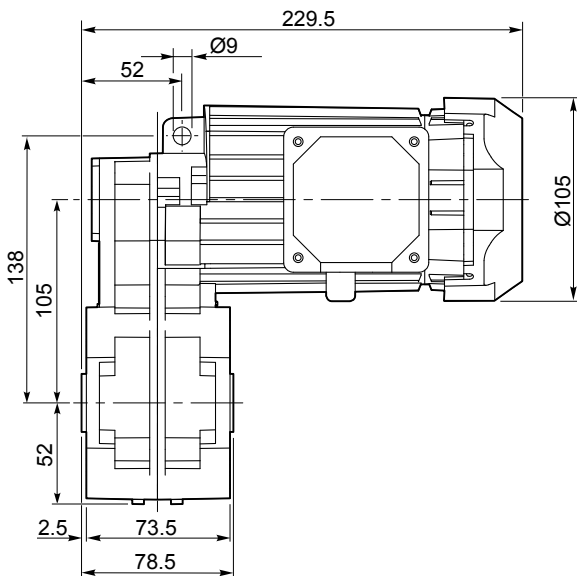
**KFT 105...1 Ph... TEFC**

**KFT 105...1 Ph...TENV**

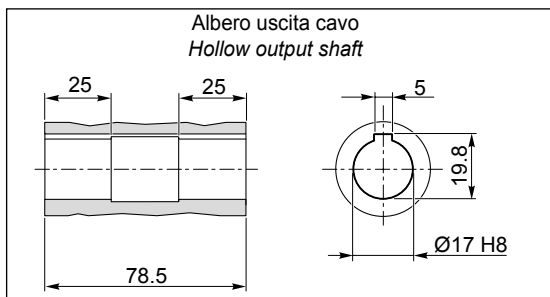


**KFT 105...3 Ph... TEFC**

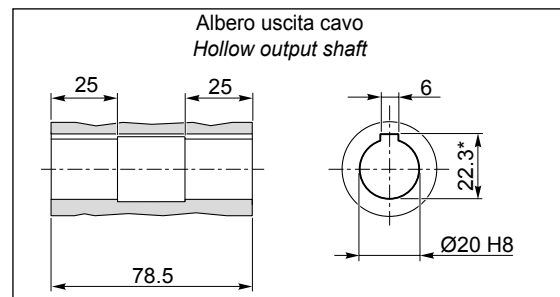
**KFT 105...3 Ph... TENV**



**O17**

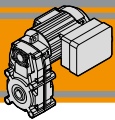


**O20**



\*Sede linguetta ribassata/ Special Keyway





# KFT105 Motoriduttori pendolari Helical parallel gearmotors

<b>Архангельск</b> (8182)63-90-72	<b>Калининград</b> (4012)72-03-81	<b>Нижегород</b> (831)429-08-12	<b>Смоленск</b> (4812)29-41-54
<b>Астана</b> (7172)727-132	<b>Калуга</b> (4842)92-23-67	<b>Новокузнецк</b> (3843)20-46-81	<b>Сочи</b> (862)225-72-31
<b>Белгород</b> (4722)40-23-64	<b>Кемерово</b> (3842)65-04-62	<b>Новосибирск</b> (383)227-86-73	<b>Ставрополь</b> (8652)20-65-13
<b>Брянск</b> (4832)59-03-52	<b>Киров</b> (8332)68-02-04	<b>Орел</b> (4862)44-53-42	<b>Тверь</b> (4822)63-31-35
<b>Владивосток</b> (423)249-28-31	<b>Краснодар</b> (861)203-40-90	<b>Оренбург</b> (3532)37-68-04	<b>Томск</b> (3822)98-41-53
<b>Волгоград</b> (844)278-03-48	<b>Красноярск</b> (391)204-63-61	<b>Пенза</b> (8412)22-31-16	<b>Тула</b> (4872)74-02-29
<b>Вологда</b> (8172)26-41-59	<b>Курск</b> (4712)77-13-04	<b>Пермь</b> (342)205-81-47	<b>Тюмень</b> (3452)66-21-18
<b>Воронеж</b> (473)204-51-73	<b>Липецк</b> (4742)52-20-81	<b>Ростов-на-Дону</b> (863)308-18-15	<b>Ульяновск</b> (8422)24-23-59
<b>Екатеринбург</b> (343)384-55-89	<b>Магнитогорск</b> (3519)55-03-13	<b>Рязань</b> (4912)46-61-64	<b>Уфа</b> (347)229-48-12
<b>Иваново</b> (4932)77-34-06	<b>Москва</b> (495)268-04-70	<b>Самара</b> (846)206-03-16	<b>Челябинск</b> (351)202-03-61
<b>Ижевск</b> (3412)26-03-58	<b>Мурманск</b> (8152)59-64-93	<b>Санкт-Петербург</b> (812)309-46-40	<b>Череповец</b> (8202)49-02-64
<b>Казань</b> (843)206-01-48	<b>Набережные Челны</b> (8552)20-53-41	<b>Саратов</b> (845)249-38-78	<b>Ярославль</b> (4852)69-52-93

Единый адрес для всех регионов: [ton@nt-rt.ru](mailto:ton@nt-rt.ru) || [www.transtecno.nt-rt.ru](http://www.transtecno.nt-rt.ru)