

# ЕСМВ

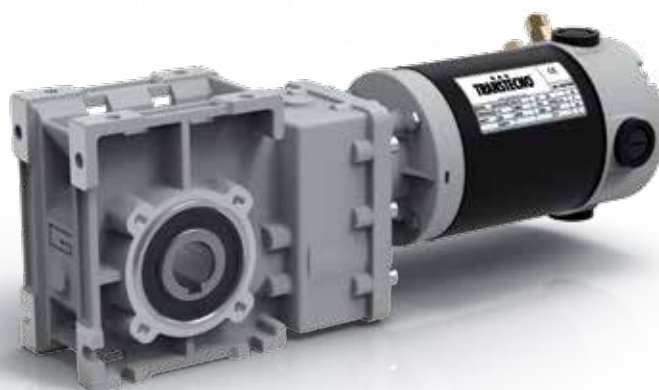
ЕСМВ



Ferrite

## Коническо-цилиндрические мотор-редукторы

### Руководство по эксплуатации



Архангельск (8182)63-90-72

Астана (7172)727-132

Белгород (4722)40-23-64

Брянск (4832)59-03-52

Владивосток (423)249-28-31

Волгоград (844)278-03-48

Вологда (8172)26-41-59

Воронеж (473)204-51-73

Екатеринбург (343)384-55-89

Иваново (4932)77-34-06

Ижевск (3412)26-03-58

Казань (843)206-01-48

Калининград (4012)72-03-81

Калуга (4842)92-23-67

Кемерово (3842)65-04-62

Киров (8332)68-02-04

Краснодар (861)203-40-90

Красноярск (391)204-63-61

Курск (4712)77-13-04

Липецк (4742)52-20-81

Магнитогорск (3519)55-03-13

Москва (495)268-04-70

Мурманск (8152)59-64-93

Набережные Челны (8552)20-53-41

Нижний Новгород (831)429-08-12

Новокузнецк (3843)20-46-81

Новосибирск (383)227-86-73

Орел (4862)44-53-42

Оренбург (3532)37-68-04

Пенза (8412)22-31-16

Пермь (342)205-81-47

Ростов-на-Дону (863)308-18-15

Рязань (4912)46-61-64

Самара (846)206-03-16

Санкт-Петербург (812)309-46-40

Саратов (845)249-38-78

Смоленск (4812)29-41-54

Сочи (862)225-72-31

Ставрополь (8652)20-65-13

Тверь (4822)63-31-35

Томск (3822)98-41-53

Тула (4872)74-02-29

Тюмень (3452)66-21-18

Ульяновск (8422)24-23-59

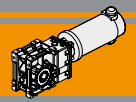
Уфа (347)229-48-12

Челябинск (351)202-03-61

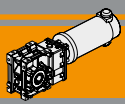
Череповец (8202)49-02-64

Ярославль (4852)69-52-93

Единый адрес для всех регионов: [ton@nt-rt.ru](mailto:ton@nt-rt.ru) || [www.transtecno.nt-rt.ru](http://www.transtecno.nt-rt.ru)



<b>Indice</b>	<b>Index</b>	Pag. Page
Caratteristiche tecniche	<i>Technical features</i>	<b>L2</b>
Designazione	<i>Classification</i>	<b>L2</b>
Sensi di rotazione	<i>Direction of rotation</i>	<b>L2</b>
Simbologia	<i>Symbols</i>	<b>L3</b>
Lubrificazione	<i>Lubrication</i>	<b>L3</b>
Carichi radiali	<i>Radial loads</i>	<b>L3</b>
Dati tecnici per servizio S2	<i>Technical data for S2 duty</i>	<b>L4</b>
Motori applicabili	<i>Motor adapters</i>	<b>L6</b>
Dimensioni	<i>Dimensions</i>	<b>L7</b>
Accessori	<i>Accessories</i>	<b>L15</b>



### Caratteristiche tecniche

### Technical features

Le caratteristiche principali dei motoriduttori CC ad assi ortogonali a magneti permanenti in ferrite serie ECMB sono:

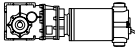
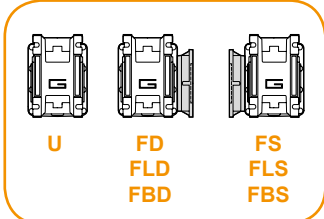
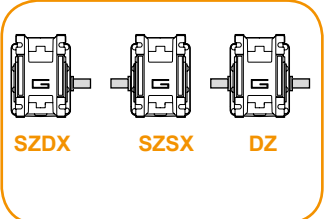
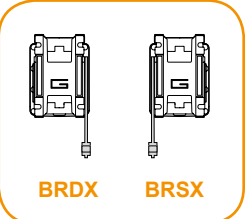
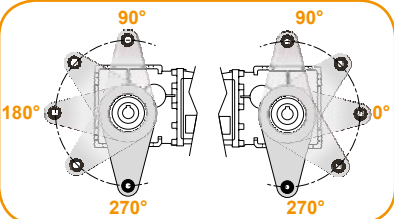
The main features of ECMB ferrite permanent magnets DC helical bevel gearmotors range are:

- Alimentazione in bassa tensione 12/24 Vcc
- Possibilità di montaggio encoder
- Potenze motore disponibili da 100 a 800W S2
- Magneti in ferrite
- Carcasse dei riduttori in pressofusione di alluminio
- Lubrificazione permanente con olio sintetico
- Ingranaggi sempre rettificati

- Low voltage power supply 12/24 Vdc
- Suitable for encoder assembly
- Motor power ratings available from 100 to 800W S2
- Ferrite magnets
- Die-cast aluminum housing
- Permanent synthetic oil long-life lubrication
- Ground helical gears

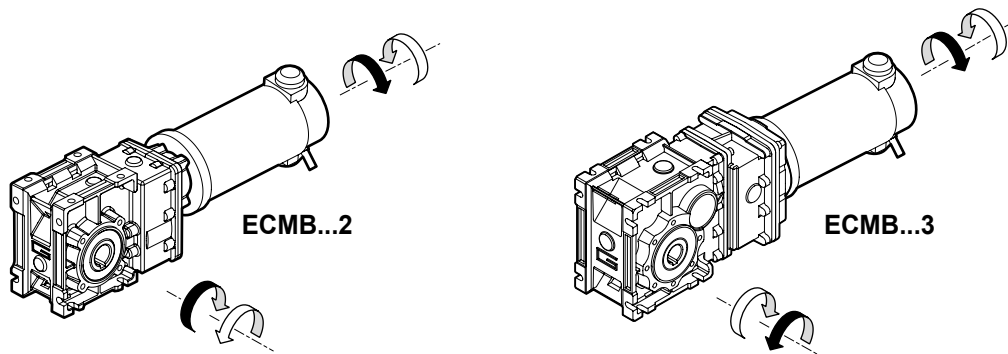
### Designazione

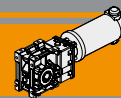
### Classification

MOTORIDUTTORE / GEARMOTOR													
ECMB	100/402						U	9.2	D20	SZDX	BRSX	90	240
Tipo Type	Grandezza Size						Versione Riduttore Gearbox Version	Rapporto Ratio	Albero di uscita Output shaft	Albero di uscita Output shaft	Braccio di reazione Torque arm	Angolo Angle	Versione Motore Motor Version
	070/402	100/402	180/402	250/402	350/402	600/402	<b>U</b> <b>FD</b> <b>FS</b> <b>FLD</b> <b>FLS</b> <b>FBD</b> <b>FBS</b>	Vedere tabella  <i>See tables</i>	Vedere tabella  <i>See tables</i>	<b>SZDX</b> <b>SZSX</b> <b>DZ</b>	<b>BRDX</b> <b>BRSX</b>	<b>0°</b> <b>90°</b> <b>180°</b> <b>270°</b>	<b>120</b> <b>240</b> <b>24E</b>
		100/502	180/502	250/502	350/502	600/502							
Versione Riduttore Gearbox Version		Albero di uscita Output shaft				Braccio di reazione Torque arm		Angolo Angle					
													

### Sensi di rotazione

### Direction of rotation





**Simbologia**

**Symbols**

$n_1$  [min<sup>-1</sup>] Velocità in ingresso / *Input speed*  
 $n_2$  [min<sup>-1</sup>] Velocità in uscita / *Output speed*  
*i* Rapporto di riduzione / *Ratio*  
 $P_1$  [kW] Potenza in entrata / *Input power*

$M_2$  [Nm] Coppia in uscita in funzione di  $P_1$  / *Output torque referred to  $P_1$*   
*sf* Fattore di servizio / *Service factor*  
 $A_2$  [N] Carico assiale ammissibile in uscita / *Permitted output axial load*  
 $R_2$  [N] Carico radiale ammissibile in uscita / *Permitted output radial load*

**Lubrificazione**

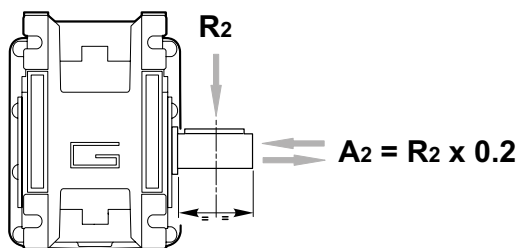
**Lubrication**

Tutti i riduttori nelle taglie 402, 502 e 633 sono forniti completi di lubrificante sintetico viscosità 320, pertanto possono essere installati in qualunque posizione di montaggio e non necessitano di manutenzione.

*Permanent synthetic oil long-life lubrication (viscosity grade 320) makes it possible to use sizes 402, 502 and 603 in all mounting positions; for this reason they can be installed in any assembly position and do not require maintenance.*

**Carichi radiali**

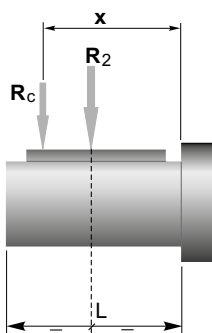
**Radial loads**



$n_2$ [min <sup>-1</sup> ]	$R_2$ [N]		
	CMB 402	CMB 502	CMB 633
400	905	1116	1835
300	996	1228	2020
200	1141	1406	2312
170	1204	1484	2441
140	1414	1743	2604
100	1582	1949	2913
90	1638	2019	3321
60	2047	2490	3801
40	2524	3029	4492
30	2778	3334	5159
20	3180	3816	5906
15	3500	4200	6500
10	3500	4200	6500

Quando il carico radiale risultante non è applicato sulla mezza-ria dell'albero occorre calcolare quello effettivo con la seguente formula:

*When the resulting radial load is not applied on the centre line of the shaft it is necessary to calculate the effective load with the following formula:*

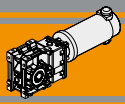


	CMB 402	CMB 502	CMB 633
<b>a</b>	86	104	118
<b>b</b>	66	79	93
<b>R<sub>2MAX</sub></b>	3500	4200	6500

$$R_c = \frac{R_2 \cdot a}{(b + x)} \leq R_{2MAX}$$

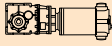

$$R \leq R_c$$

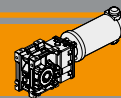
*a, b = valori riportati nella tabella  
a, b = values given in the table*



### Dati tecnici per servizio S2

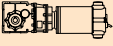
### Technical data for S2 duty

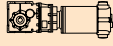
$P_1$ [W]	$n_2$ [min <sup>-1</sup> ]	$M_2$ [Nm]	sf	i		Versione motore Motor version	$P_1$ [W]	$n_2$ [min <sup>-1</sup> ]	$M_2$ [Nm]	sf	i		Versione motore Motor version
<b>100</b>							<b>250</b>						
(3000 min <sup>-1</sup> )	<b>485</b>	1.8	16.8	6.18	<b>070/402</b>	12E/24E	(3000 min <sup>-1</sup> )	<b>104</b>	21.6	2.4	28.89	<b>180/402</b>	120/240/24E
	<b>401</b>	2.2	13.8	7.49									
	<b>326</b>	2.8	11.3	9.20									
	<b>254</b>	3.5	9.9	11.83									
	<b>240</b>	3.7	9.4	12.48									
	<b>202</b>	4.4	7.9	14.83									
	<b>170</b>	5.3	6.6	17.63									
	<b>161</b>	5.6	7.7	18.60									
	<b>134</b>	6.7	6.4	22.33									
	<b>125</b>	7.2	6.0	23.91									
	<b>104</b>	8.6	5.9	28.89									
	<b>97</b>	9.2	5.5	30.84									
	<b>89</b>	10.0	5.1	33.57									
	<b>84</b>	10.7	4.8	35.63									
	<b>70</b>	12.8	4.0	42.75									
	<b>54</b>	16.6	3.1	55.31									
	<b>51</b>	17.7	2.9	59.06									
	<b>47</b>	19.2	2.7	64.29									
	<b>41</b>	21.7	2.4	72.50									
<b>140</b>							<b>350</b>						
(3000 min <sup>-1</sup> )	<b>485</b>	2.6	12.0	6.18	<b>100/402</b>	120/240/24E	(3000 min <sup>-1</sup> )	<b>485</b>	6.5	4.8	6.18	<b>250/402</b>	120/240
	<b>401</b>	3.1	9.9	7.49									
	<b>326</b>	3.9	8.0	9.20									
	<b>254</b>	5.0	7.1	11.83									
	<b>240</b>	5.2	6.7	12.48									
	<b>202</b>	6.2	5.6	14.83									
	<b>170</b>	7.4	4.7	17.63									
	<b>161</b>	7.8	5.5	18.60									
	<b>134</b>	9.4	4.6	22.33									
	<b>125</b>	10.0	4.3	23.91									
	<b>104</b>	12.1	4.2	28.89									
	<b>97</b>	12.9	3.9	30.84									
	<b>89</b>	14.1	3.6	33.57									
	<b>84</b>	14.9	3.4	35.63									
	<b>70</b>	17.9	2.8	42.75									
	<b>54</b>	23.2	2.2	55.31									
	<b>51</b>	24.7	2.1	59.06									
	<b>47</b>	26.9	1.9	64.29									
	<b>41</b>	30.4	1.7	72.50									
	<b>54</b>	23.2	4.23	55.31	<b>100/502</b>	120/240/24E		<b>485</b>	6.5	8.5	6.18	<b>250/502</b>	120/240
	<b>51</b>	24.7	3.96	59.06									
	<b>47</b>	26.9	3.64	64.29									
	<b>41</b>	30.4	3.2	72.50									
	<b>485</b>	7.8	7.0	7.49									
	<b>326</b>	9.6	5.7	9.2									
	<b>254</b>	12.4	5.7	11.83									
	<b>240</b>	13.1	5.4	12.48									
	<b>202</b>	15.5	4.5	14.83									
	<b>170</b>	18.5	3.8	17.63									
	<b>161</b>	19.5	4.4	18.6									
	<b>134</b>	23.4	3.7	22.33									
	<b>125</b>	25.0	3.4	23.91									
	<b>104</b>	30.3	3.2	28.89									
	<b>97</b>	32.3	3.0	30.84									
	<b>89</b>	35.2	2.8	33.57									
	<b>84</b>	37.3	2.6	35.63									
	<b>70</b>	44.8	2.2	42.75									
	<b>54</b>	57.9	1.7	55.31									
	<b>51</b>	61.9	1.6	59.06									
	<b>47</b>	67.3	1.5	64.29									
	<b>41</b>	75.9	1.3	72.50									
<b>250</b>							<b>350</b>						
(3000 min <sup>-1</sup> )	<b>485</b>	4.6	6.7	6.18	<b>180/402</b>	120/240/24E	(3000 min <sup>-1</sup> )	<b>485</b>	6.5	8.5	6.18	<b>250/502</b>	120/240
	<b>401</b>	5.6	5.5	7.49									
	<b>326</b>	6.9	4.5	9.20									
	<b>254</b>	8.8	4.0	11.83									
	<b>240</b>	9.3	3.7	12.48									
	<b>202</b>	11.1	3.2	14.83									
	<b>170</b>	13.2	2.7	17.63									
	<b>161</b>	13.9	3.1	18.60									
	<b>134</b>	16.7	2.6	22.33									
	<b>125</b>	17.9	2.4	23.91									



Dati tecnici per servizio S2

Technical data for S2 duty

P <sub>1</sub> [W]	n <sub>2</sub> [min <sup>-1</sup> ]	M <sub>2</sub> [Nm]	sf	i		Versione motore Motor version
<b>350</b>						
(3000 min <sup>-1</sup> )	<b>106</b>	29.5	5.8	28.17	<b>250/633</b>	120/240
	<b>89</b>	35.4	4.9	33.81		
	<b>84</b>	37.6	4.6	35.92		
	<b>77</b>	40.7	4.8	38.88		
	<b>64</b>	49.4	4.0	47.16		
	<b>52</b>	60.7	3.2	57.93		
	<b>49</b>	64.5	3.0	61.63		
	<b>41</b>	77.5	2.5	73.96		
	<b>38</b>	82.3	2.4	78.58		
	<b>32</b>	97.7	2.0	93.33		
	<b>21</b>	147.2	1.3	140.52		
	<b>17</b>	190.4	1.0	181.81		
	<b>14</b>	221.3	0.9	211.31		
	<b>13</b>	249.6	0.8	238.31		

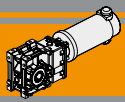
P <sub>1</sub> [W]	n <sub>2</sub> [min <sup>-1</sup> ]	M <sub>2</sub> [Nm]	sf	i		Versione motore Motor version
<b>500</b>						
(3000 min <sup>-1</sup> )	<b>139</b>	32	5.3	21.56	<b>350/633</b>	120/240
	<b>113</b>	40	4.3	26.48		
	<b>106</b>	42	4.1	28.17		
	<b>89</b>	51	3.4	33.81		
	<b>84</b>	54	3.2	35.92		
	<b>77</b>	58	3.4	38.88		
	<b>64</b>	71	2.8	47.16		
	<b>52</b>	87	2.2	57.93		
	<b>49</b>	92	2.1	61.63		
	<b>41</b>	111	1.8	73.96		
	<b>38</b>	118	1.7	78.58		
	<b>32</b>	140	1.4	93.33		
	<b>21</b>	210	0.9	140.52		
	<b>17</b>	272	0.7	181.81		
	<b>14</b>	279	0.7	211.31		
	<b>13</b>	279	0.7	238.31		

<b>500</b>								
(3000 min <sup>-1</sup> )	<b>485</b>	9	3.4	6.18	<b>350/402</b>	120/240		
	<b>401</b>	11	2.8	7.49				
	<b>326</b>	14	2.3	9.2				
	<b>254</b>	18	2.0	11.83				
	<b>240</b>	19	1.9	12.48				
	<b>202</b>	22	1.6	14.83				
	<b>170</b>	26	1.3	17.63				
	<b>161</b>	28	1.5	18.6				
	<b>134</b>	33	1.3	22.33				
	<b>125</b>	36	1.2	23.91				
	<b>104</b>	43	1.2	28.89				
	<b>97</b>	46	1.1	30.84				
	<b>89</b>	50	1.0	33.57				
	<b>84</b>	53	1.0	35.63				
	<b>70</b>	64	0.8	42.75				
	<b>54</b>	73	0.7	55.31				
	<b>51</b>	73	0.7	59.06				
	<b>47</b>	73	0.7	64.29				
	<b>326</b>	14	4.0	9.20			<b>350/502</b>	120/240
	<b>254</b>	18	4.0	11.83				
	<b>240</b>	19	3.7	12.48				
	<b>202</b>	22	3.2	14.83				
	<b>170</b>	26	2.7	17.63				
	<b>161</b>	28	3.1	18.60				
	<b>134</b>	33	2.6	22.33				
	<b>125</b>	35.8	2.4	23.91				
	<b>104</b>	43	2.3	28.89				
	<b>97</b>	46	2.1	30.84				
	<b>89</b>	50	2.0	33.57				
	<b>84</b>	53	1.8	35.63				
	<b>70</b>	64	1.5	42.75				
	<b>54</b>	83	1.2	55.31				
	<b>51</b>	88	1.1	59.06				
	<b>47</b>	96	1.0	64.29				
	<b>41</b>	108.5	0.9	72.50				

<b>800</b>								
(3000 min <sup>-1</sup> )	<b>485</b>	15	2.1	6.18	<b>600/402</b>	120/240		
	<b>401</b>	18	1.7	7.49				
	<b>326</b>	22	1.4	9.20				
	<b>254</b>	28	1.2	11.83				
	<b>240</b>	30	1.2	12.48				
	<b>202</b>	36	1.0	14.83				
	<b>170</b>	42	0.8	17.63				
	<b>161</b>	45	1.0	18.60				
	<b>134</b>	53	0.8	22.33				
	<b>125</b>	57	0.8	23.91				
	<b>104</b>	69	0.7	28.89				
	<b>97</b>	73	0.7	30.84				
	<b>89</b>	73	0.7	33.57				
	<b>84</b>	73	0.7	35.63				
	<b>70</b>	73	0.7	42.75				
	<b>485</b>	15	3.7	6.18			<b>600/502</b>	120/240
	<b>401</b>	18	3.1	7.49				
	<b>326</b>	22	2.5	9.20				
	<b>254</b>	28	2.5	11.83				
	<b>240</b>	30	2.3	12.48				
	<b>202</b>	36	2.0	14.83				
	<b>170</b>	42	1.7	17.63				
	<b>161</b>	45	1.9	18.60				
	<b>134</b>	53	1.6	22.33				
	<b>125</b>	57	1.5	23.91				
	<b>104</b>	69	1.4	28.89				
	<b>97</b>	74	1.3	30.84				
	<b>89</b>	80	1.2	33.57				
	<b>84</b>	85	1.1	35.63				
	<b>70</b>	102	1.0	42.75				
	<b>54</b>	132	0.7	55.31				
	<b>51</b>	140	0.7	59.06				
	<b>47</b>	140	0.7	64.29				
	<b>41</b>	140	0.7	72.50				

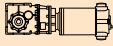
N.B.  
Verificare sempre che la coppia M2 utilizzata non  
ecceda il valore indicato nelle caselle in grigio  
N.B.  
Please check that the output torque M2 does not  
exceed the value in the grey areas





### Dati tecnici per servizio S2

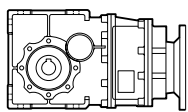
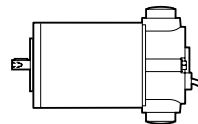
### Technical data for S2 duty

P <sub>1</sub> [W]	n <sub>2</sub> [min <sup>-1</sup> ]	M <sub>2</sub> [Nm]	sf	i		Versione motore Motor version
<b>800</b>						
(3000 min <sup>-1</sup> )	<b>306</b>	23	5.0	9.81	<b>600/633</b>	120/240
	<b>287</b>	25	4.7	10.44		
	<b>239</b>	30	3.9	12.53		
	<b>225</b>	32	3.7	13.31		
	<b>190</b>	38	3.5	15.81		
	<b>169</b>	43	4.0	17.77		
	<b>139</b>	52	3.3	21.56		
	<b>113</b>	63	2.7	26.48		
	<b>106</b>	67	2.6	28.17		
	<b>89</b>	81	2.1	33.81		
	<b>84</b>	86	2.0	35.92		
	<b>77</b>	93	2.1	38.88		
	<b>64</b>	113	1.7	47.16		
	<b>52</b>	139	1.4	57.93		
	<b>49</b>	148	1.3	61.63		
	<b>41</b>	177	1.1	73.96		
	<b>38</b>	188	1.0	78.58		
	<b>32</b>	223	0.9	93.33		
	<b>21</b>	279	0.7	140.52		

N.B.  
Verificare sempre che la coppia M<sub>2</sub> utilizzata non ecceda il valore indicato nelle caselle in grigio  
N.B.  
Please check that the output torque M<sub>2</sub> does not exceed the value in the grey areas

### Motori applicabili

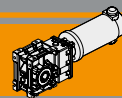
### Motor adapters



		EC					
		070.12E 070.24E	100.120 100.240 100.24E	180.120 180.240 180.24E	250.120 250.240	350.120 350.240	600.120 600.240
<b>CMB</b>	<b>402</b>	6.18 - 72.50	6.18 - 72.50	6.18 - 72.50	6.18 - 72.50	6.18 - 72.50	6.18 - 72.50
	<b>502</b>	6.18 - 72.50	6.18 - 72.50	6.18 - 72.50	6.18 - 72.50	6.18 - 72.50	6.18 - 72.50
	<b>633</b>				6.58 - 238.31	6.58 - 238.31	6.58 - 238.31

6.18 - 72.50

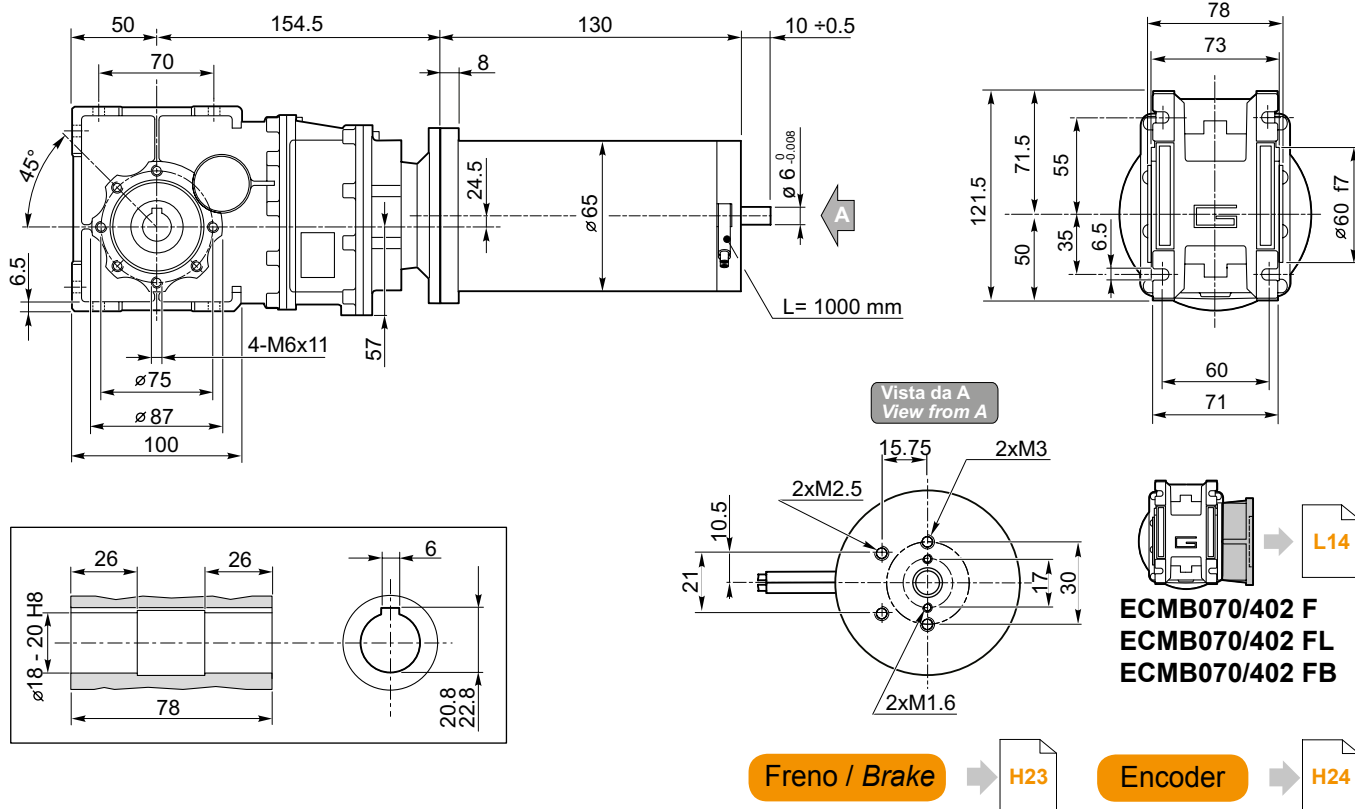
Rapporti di riduzione i  
Ratio i



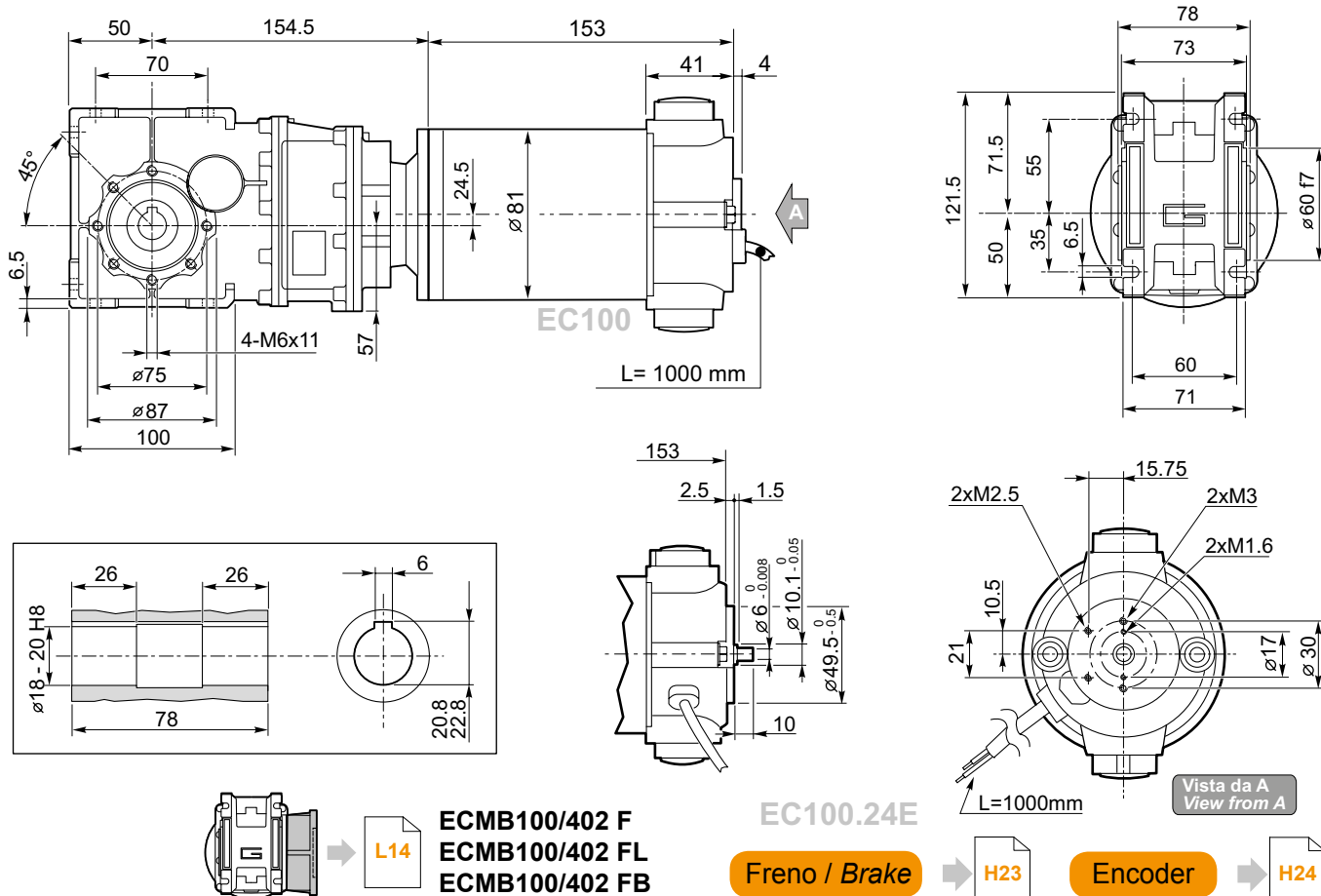
**Dimensioni**

**Dimensions**

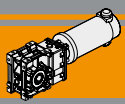
**ECMB070/402 U**



**ECMB100/402 U**



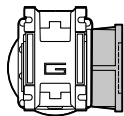
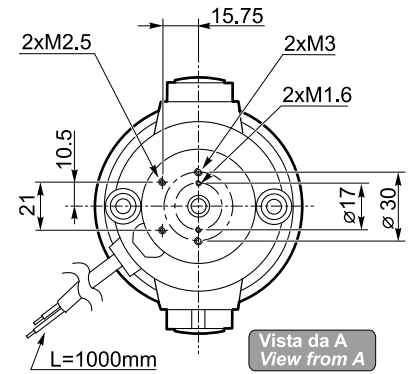
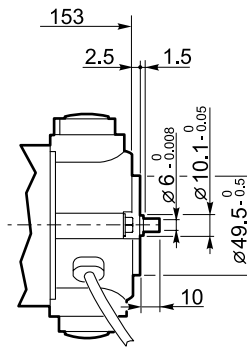
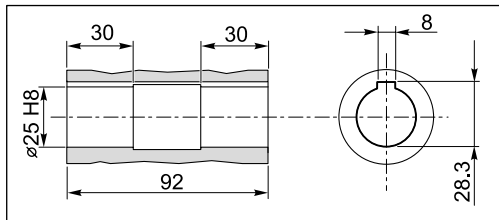
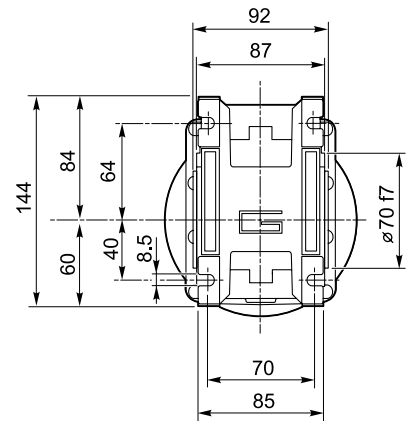
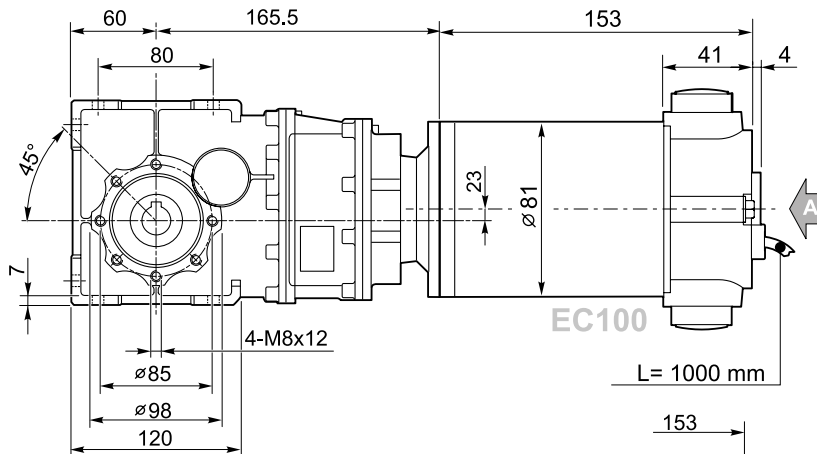




### Dimensioni

### Dimensions

#### ECMB100/502 U



**ECMB100/502 F**  
**ECMB100/502 FL**  
**ECMB100/502 FB**

EC100.24E

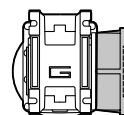
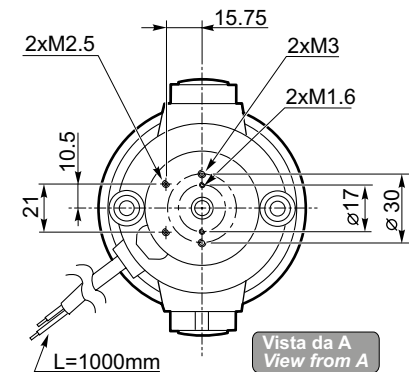
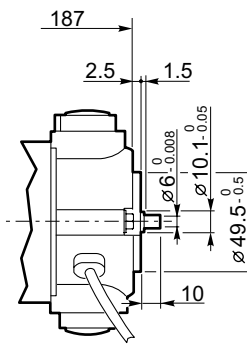
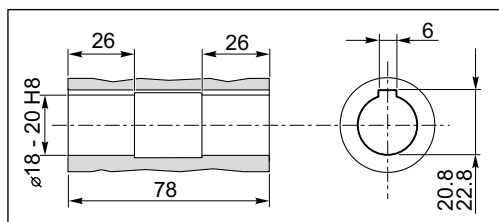
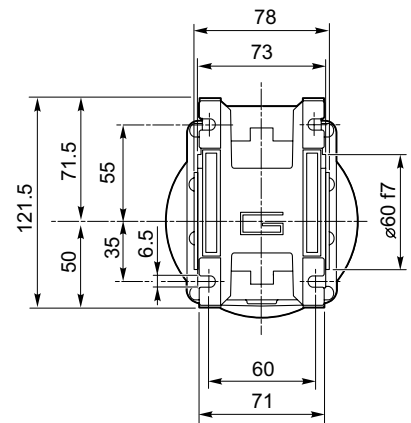
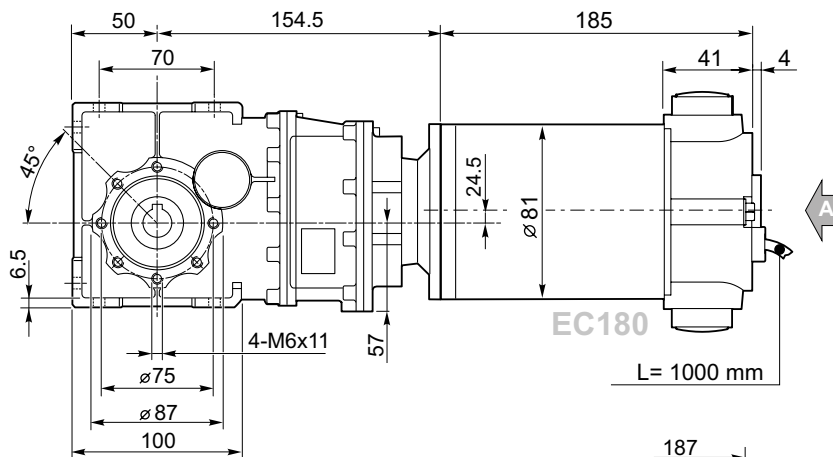
Freno / Brake



Encoder



#### ECMB180/402 U



**ECMB180/402 F**  
**ECMB180/402 FL**  
**ECMB180/402 FB**

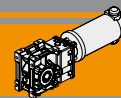
EC180.24E

Freno / Brake



Encoder

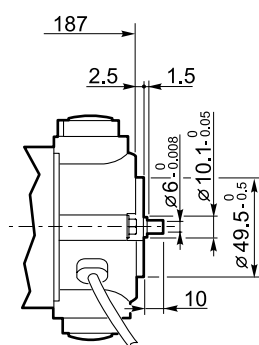
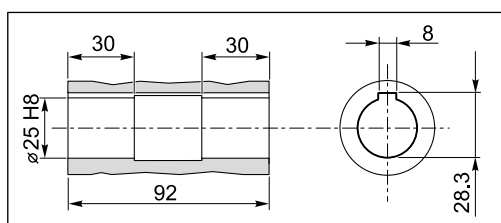
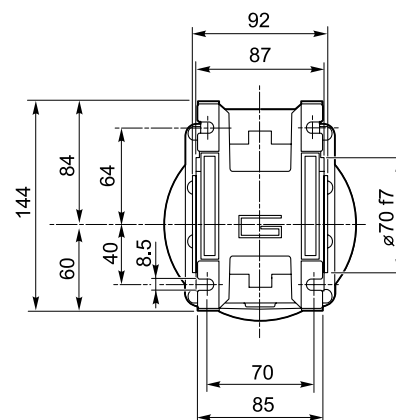
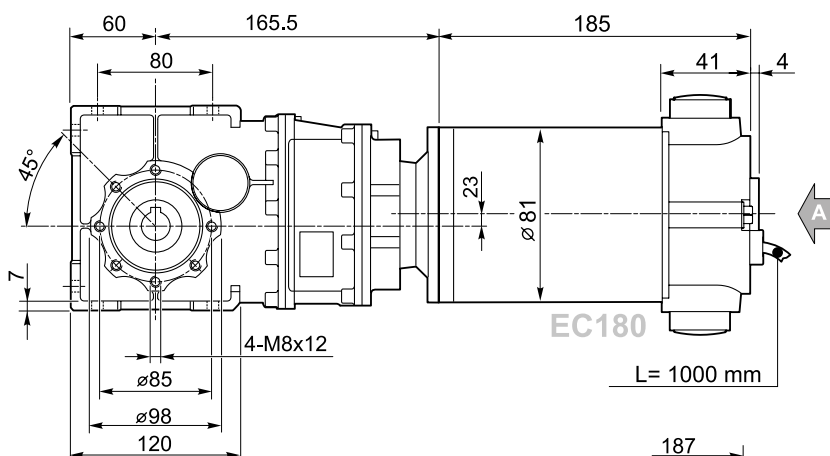




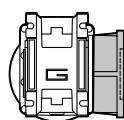
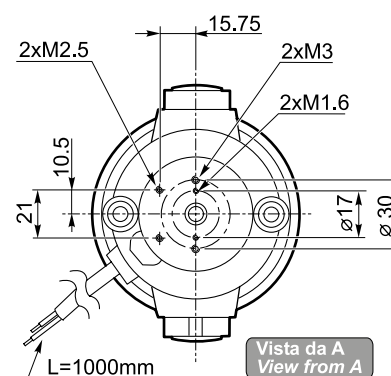
Dimensioni

Dimensions

ECMB180/502 U



EC180.24E



ECMB180/502 F  
ECMB180/502 FL  
ECMB180/502 FB

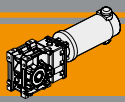
Freno / Brake



Encoder



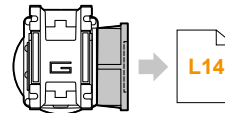
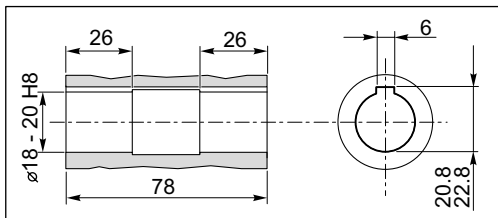
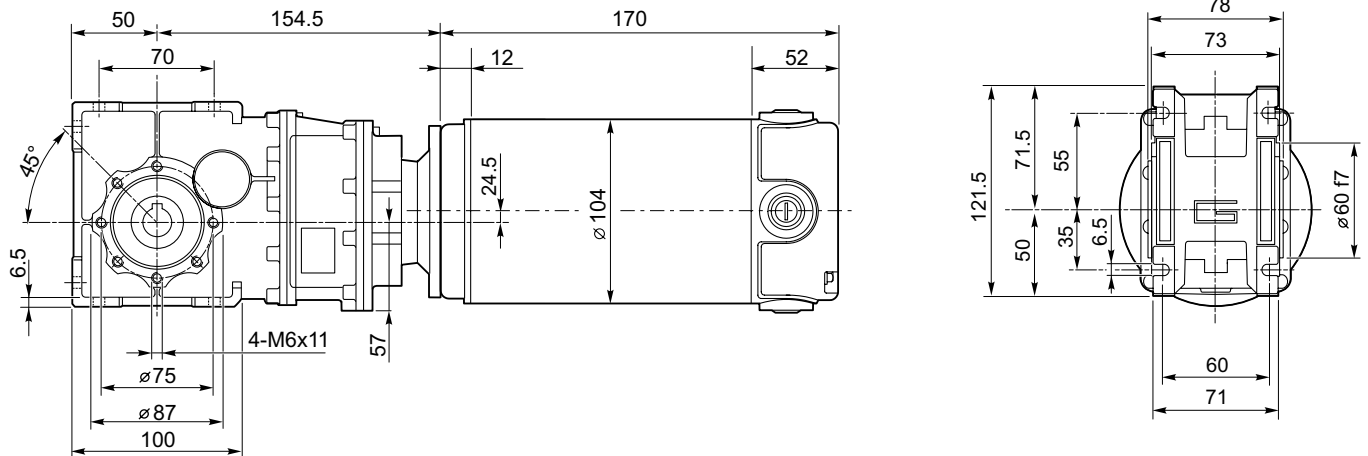
ECMB



### Dimensioni

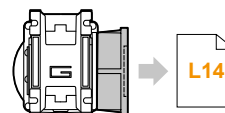
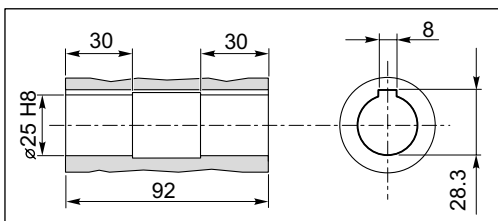
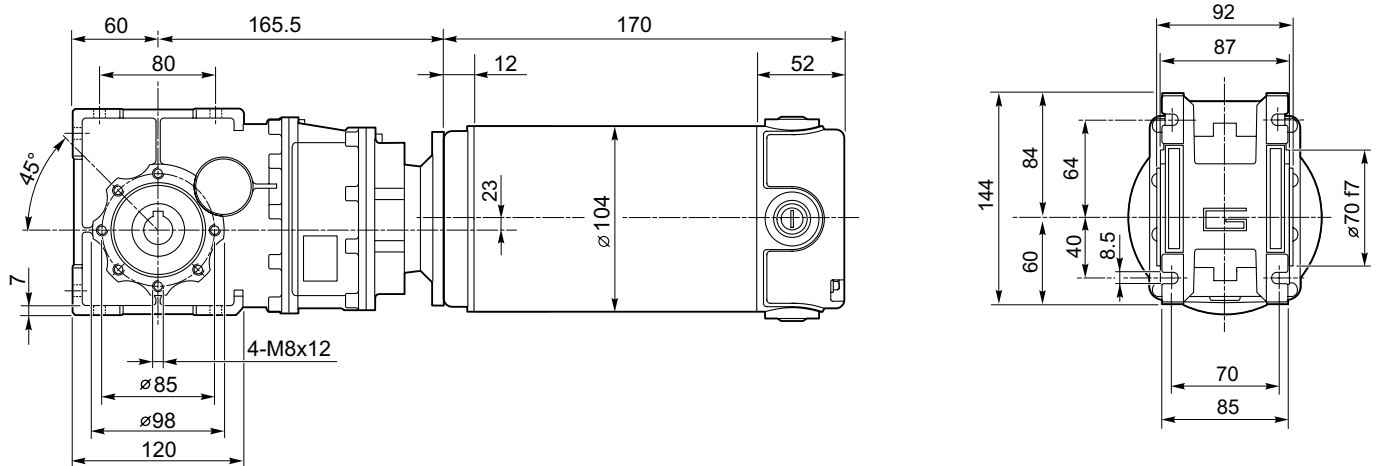
### Dimensions

#### ECMB250/402 U

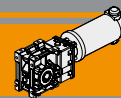


**ECMB250/402 F**  
**ECMB250/402 FL**  
**ECMB250/402 FB**

#### ECMB250/502 U



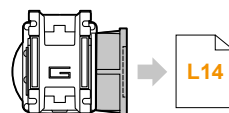
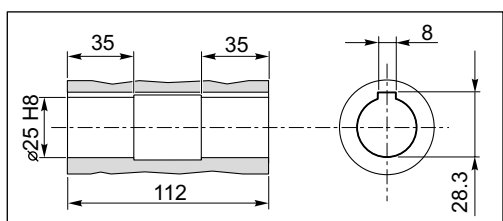
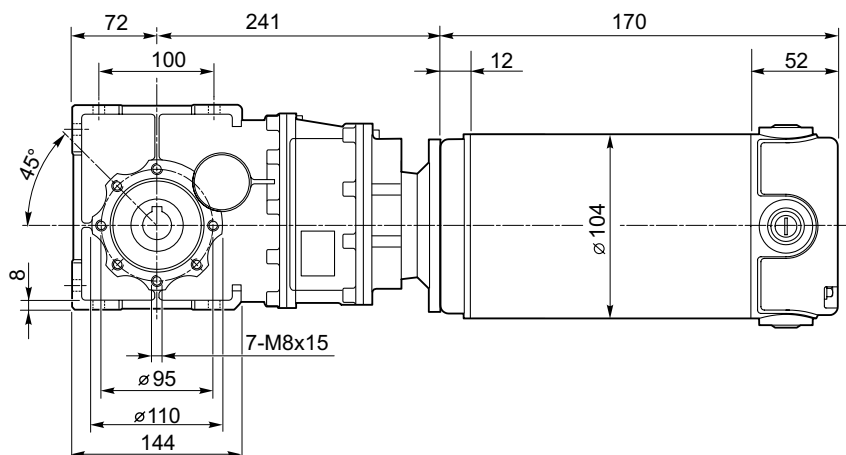
**ECMB250/502 F**  
**ECMB250/502 FL**  
**ECMB250/502 FB**



**Dimensioni**

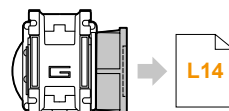
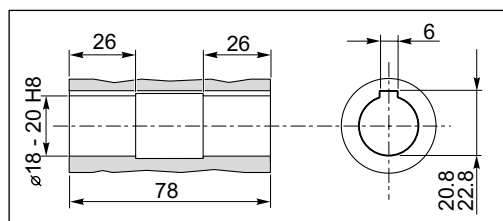
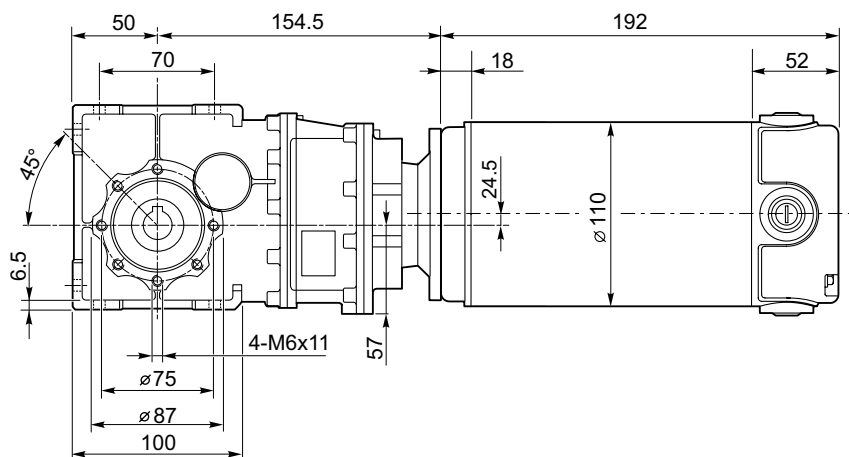
**Dimensions**

**ECMB250/633 U**



**ECMB250/633 F**  
**ECMB250/633 FL**  
**ECMB250/633 FB**

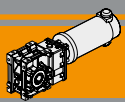
**ECMB350/402 U**



**ECMB350/402 F**  
**ECMB350/402 FL**  
**ECMB350/402 FB**

**Freno / Brake**

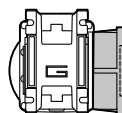
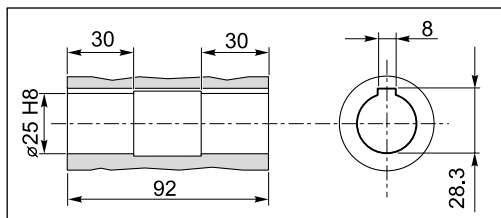
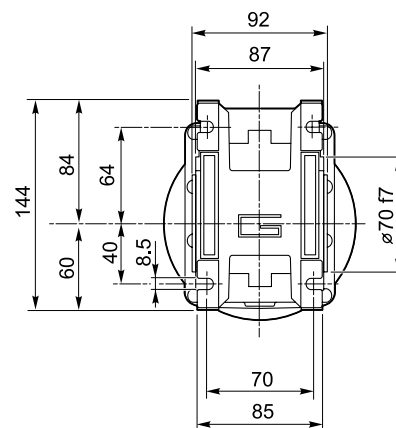
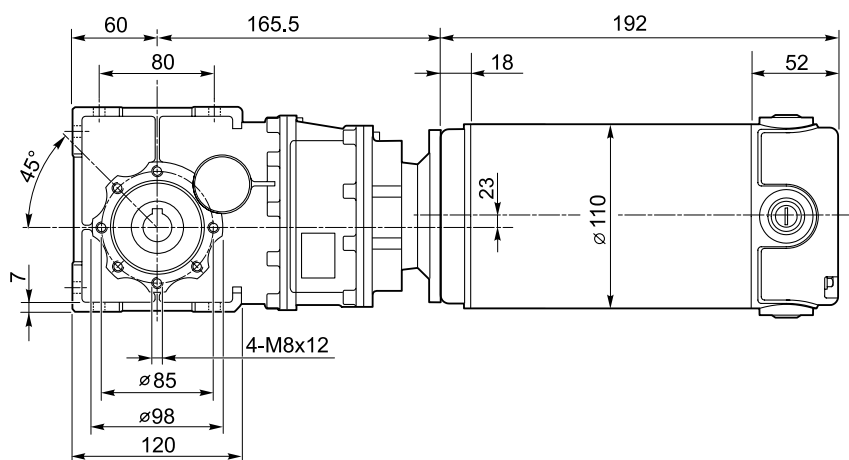
**H23**



### Dimensioni

### Dimensions

#### ECMB350/502 U

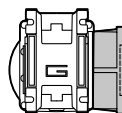
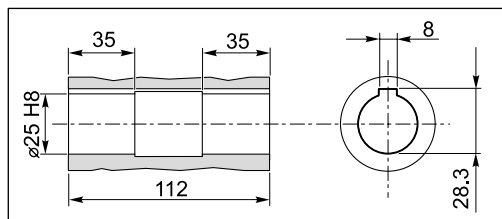
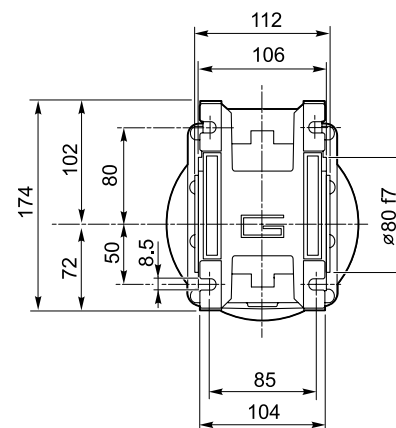
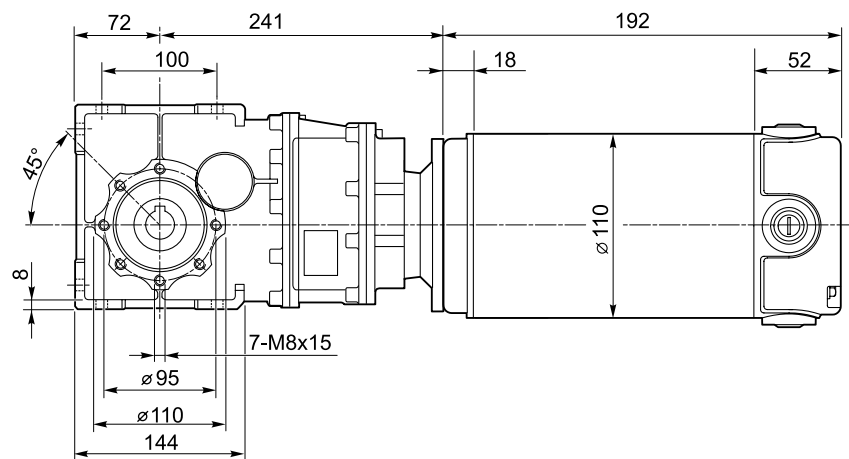


**ECMB350/502 F**  
**ECMB350/502 FL**  
**ECMB350/502 FB**

**Freno / Brake**



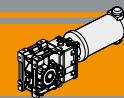
#### ECMB350/633 U



**ECMB350/633 F**  
**ECMB350/633 FL**  
**ECMB350/633 FB**

**Freno / Brake**

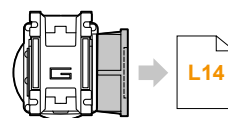
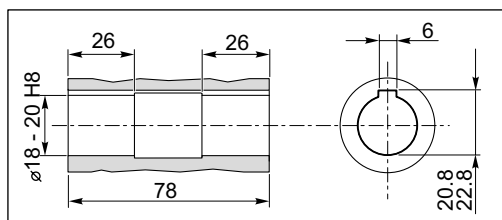
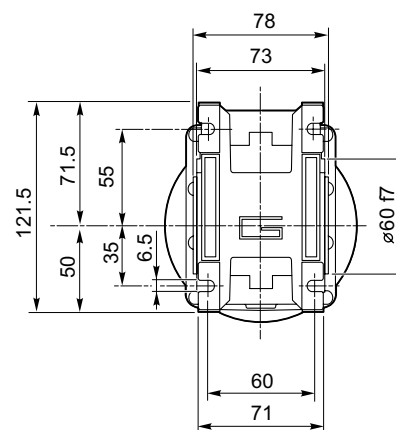
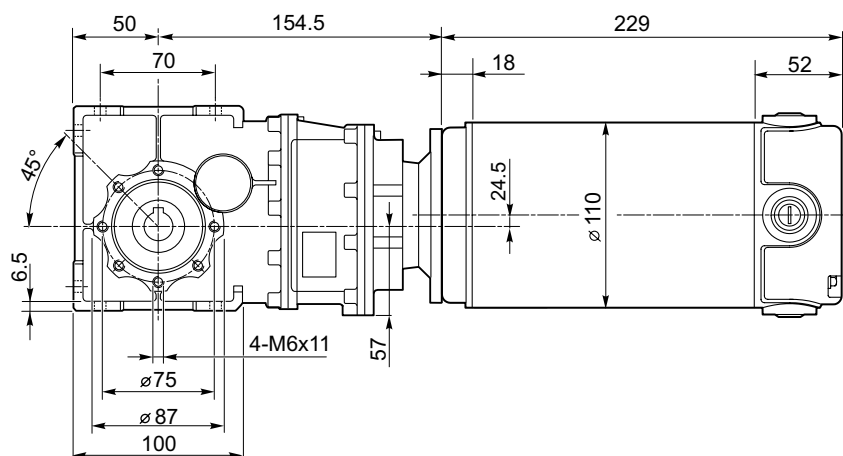




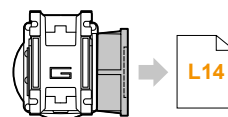
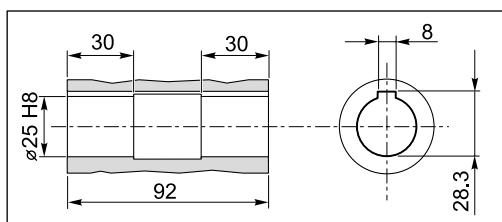
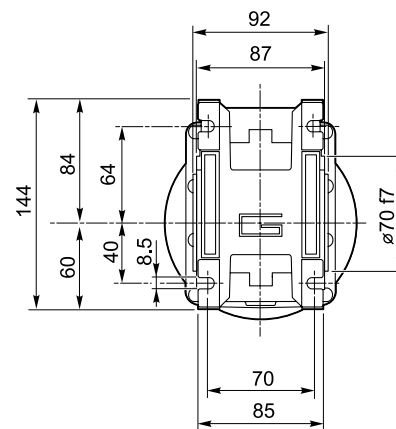
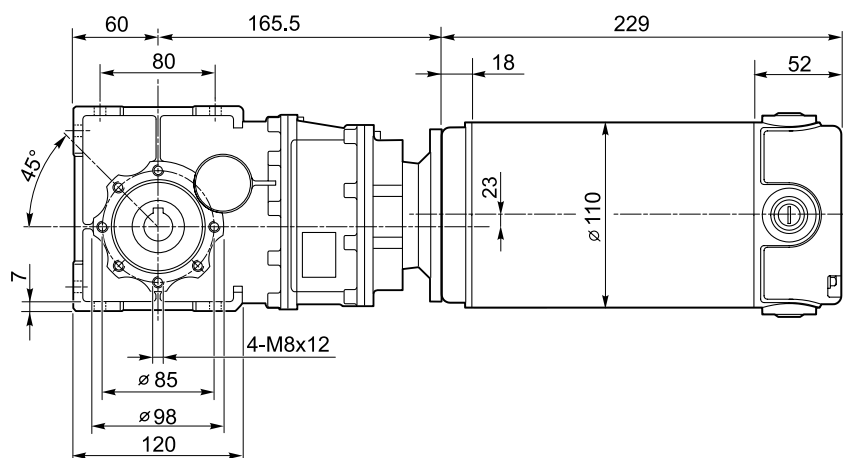
**Dimensioni**

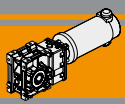
**Dimensions**

**ECMB600/402 U**



**ECMB600/502 U**

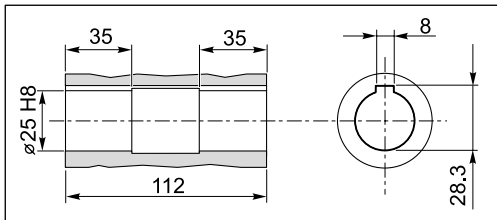
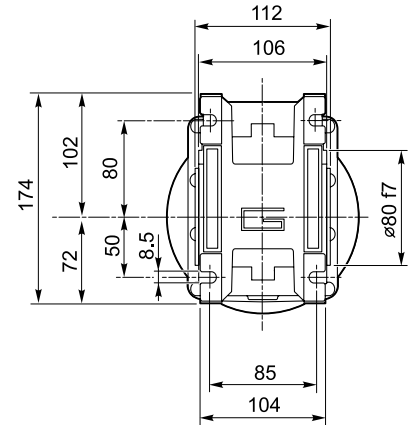
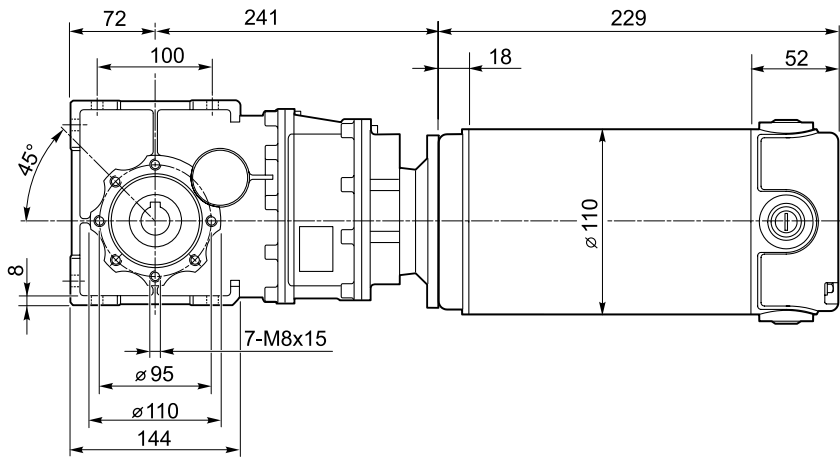




### Dimensioni

### Dimensions

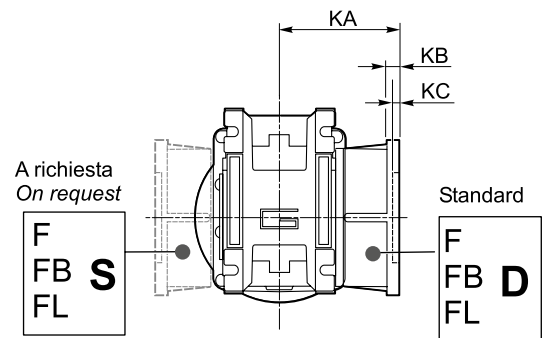
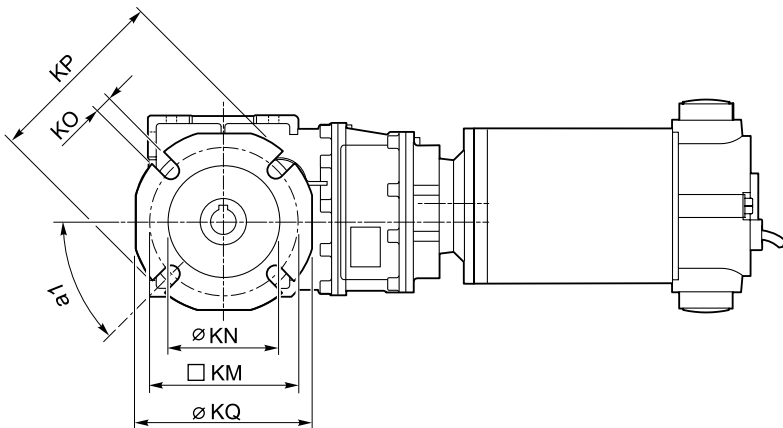
#### ECMB600/633 U



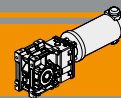
Freno / Brake

H23

#### ECMB.../... F... Flange uscita / Output flanges

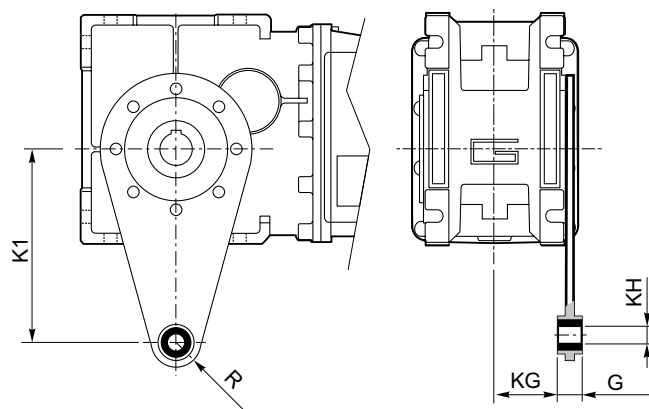
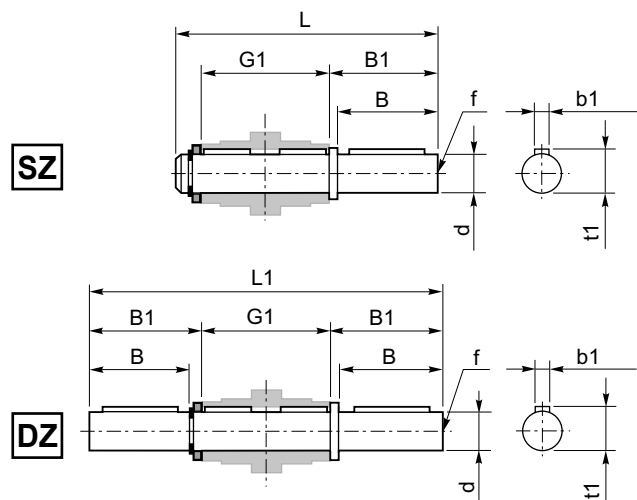


CMB	Flange uscita / Output flanges																										
	F									FL									FB								
	a <sub>1</sub>	KA	KB	KC	KM	KN H8	KO	KP	KQ	a <sub>1</sub>	KA	KB	KC	KM	KN H8	KO	KP	KQ	a <sub>1</sub>	KA	KB	KC	KM	KN H8	KO	KP	KQ
402	45°	67	7.5	4.5	80-95	60	9	110	95	45°	97	7.5	4.5	80-95	60	9	110	95	45°	80	8.5	5	115-125	95	9.5	140	112
502	45°	90	9	5	90-110	70	11	125	110	45°	120	9	5	90-110	70	11	125	110	45°	89	9	5	130-145	110	9.5	160	132
633	45°	82	10	6	150 - 160	115	11	180	142	45°	112	10	8	150 - 160	115	11	180	142	45°	98	11	5	165	130	11	200	160



Accessori

Accessories



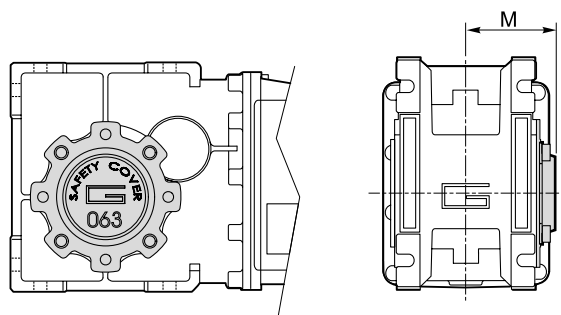
Albero lento / Output shaft

CMB	d h7	B	B1	G1	L	L1	f	b1	t1
402	18	40	43	78	128	164	M6	6	20.5
502	25	50	53.5	92	153	199	M10	8	28
633	25	50	53.5	112	173	219	M10	8	28

Braccio di reazione / Torque arm

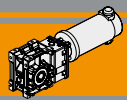
CMB	K1	G	KG	KH	R
402	100	14	31	10	18
502	100	14	38	10	18
633	150	14	47.5	10	18

SC - Safety cover



CMB	M
402	54.5
502	62.5
633	73





<b>Архангельск (8182)63-90-72</b>	<b>Калининград (4012)72-03-81</b>	<b>Нижегород (831)429-08-12</b>	<b>Смоленск (4812)29-41-54</b>
<b>Астана (7172)727-132</b>	<b>Калуга (4842)92-23-67</b>	<b>Новокузнецк (3843)20-46-81</b>	<b>Сочи (862)225-72-31</b>
<b>Белгород (4722)40-23-64</b>	<b>Кемерово (3842)65-04-62</b>	<b>Новосибирск (383)227-86-73</b>	<b>Ставрополь (8652)20-65-13</b>
<b>Брянск (4832)59-03-52</b>	<b>Киров (8332)68-02-04</b>	<b>Орел (4862)44-53-42</b>	<b>Тверь (4822)63-31-35</b>
<b>Владивосток (423)249-28-31</b>	<b>Краснодар (861)203-40-90</b>	<b>Оренбург (3532)37-68-04</b>	<b>Томск (3822)98-41-53</b>
<b>Волгоград (844)278-03-48</b>	<b>Красноярск (391)204-63-61</b>	<b>Пенза (8412)22-31-16</b>	<b>Тула (4872)74-02-29</b>
<b>Вологда (8172)26-41-59</b>	<b>Курск (4712)77-13-04</b>	<b>Пермь (342)205-81-47</b>	<b>Тюмень (3452)66-21-18</b>
<b>Воронеж (473)204-51-73</b>	<b>Липецк (4742)52-20-81</b>	<b>Ростов-на-Дону (863)308-18-15</b>	<b>Ульяновск (8422)24-23-59</b>
<b>Екатеринбург (343)384-55-89</b>	<b>Магнитогорск (3519)55-03-13</b>	<b>Рязань (4912)46-61-64</b>	<b>Уфа (347)229-48-12</b>
<b>Иваново (4932)77-34-06</b>	<b>Москва (495)268-04-70</b>	<b>Самара (846)206-03-16</b>	<b>Челябинск (351)202-03-61</b>
<b>Ижевск (3412)26-03-58</b>	<b>Мурманск (8152)59-64-93</b>	<b>Санкт-Петербург (812)309-46-40</b>	<b>Череповец (8202)49-02-64</b>
<b>Казань (843)206-01-48</b>	<b>Набережные Челны (8552)20-53-41</b>	<b>Саратов (845)249-38-78</b>	<b>Ярославль (4852)69-52-93</b>

Единый адрес для всех регионов: [ton@nt-rt.ru](mailto:ton@nt-rt.ru) || [www.transtecno.nt-rt.ru](http://www.transtecno.nt-rt.ru)